

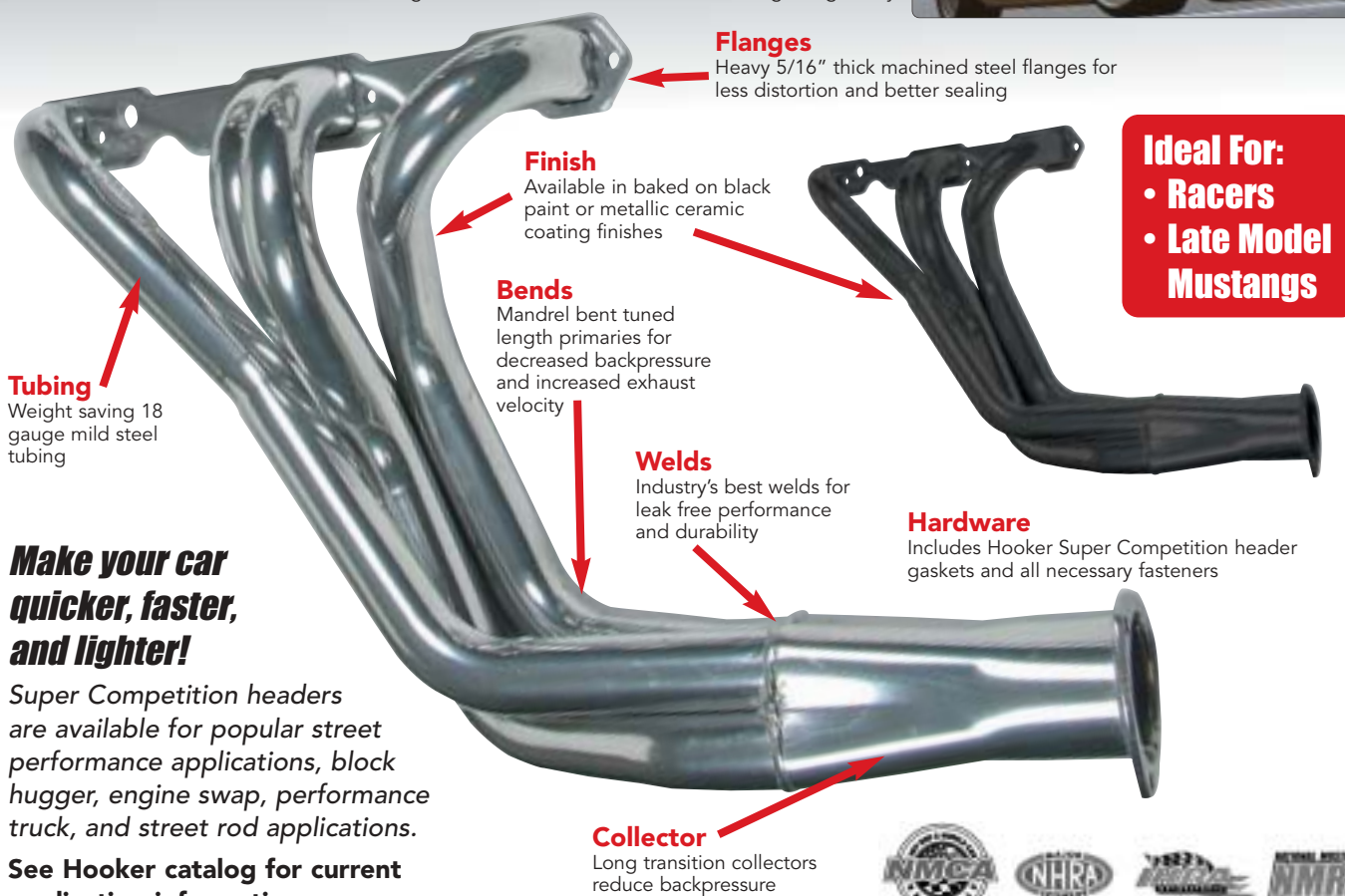


THE WORLD'S BEST HEADER! It's a tall statement, but true. Hooker has been in the business of making the best headers since the 1960s when Hooker honed its teeth on factory big block muscle cars, making premium quality headers for the street, strip and oval track. Hooker has branched its product line out to include headers and exhaust systems to include many "non-race" applications such as RVs, tow vehicles, off-road vehicles and many daily-drivers.

SUPER COMPETITION HEADERS

When Only the Best Will Do!

With Hooker Super Competition the objective has always been to make the maximum horsepower possible and to put it at the optimum point in the power curve. Because of the immense complexity of a modern engine and vehicle combination there are no simple quick answers. Hooker will sometimes spend up to 2 to 3 times more just to make the Super Competition header work only 5 to 10% better. That commitment to excellence has made Hooker Headers the winningest header manufacturer in automotive drag racing history.



Make your car quicker, faster, and lighter!

Super Competition headers are available for popular street performance applications, block hugger, engine swap, performance truck, and street rod applications.

See Hooker catalog for current application information.



AEROCHAMBER MUFFLERS

This aluminized/stainless steel constructed muffler features our unique:

- Aerodynamic lens for directing pressure waves in and out of the muffler for superior sound control
- Stepped acceleration chamber that increases exhaust gas velocity for maximum flow and minimum back pressure
- Tuned resonance chamber that eliminates harsh harmonics during heavy engine load
- Reinforced inlets and outlets for increased structural strength

These design features combine to improve flow rate 23% over the most popular competition.

DESCRIPTION

Universal - 2-1/4" I.D. offset inlet/2-1/4" offset outlet
 Universal - 2-1/2" I.D. offset inlet/2-1/2" center outlet
 Universal - 2-1/2" I.D. offset inlet/2-1/2" offset outlet
 82-92 Camaro/Firebird - 2-1/4" I.D. offset inlet/2-1/2" dual outlet
 93-96 Camaro/Firebird - 2-1/2" I.D. offset inlet/2-1/4" dual outlet
 84-95 Corvette - 2-1/2" I.D. offset inlet/3-1/2" dual outlet
 79-96 Mustang - 2-1/4" I.D. offset inlet/2-1/4" offset outlet
 79-96 Mustang - 2-1/2" I.D. offset inlet/2-1/2" offset outlet

PART NO.

21503HKR
 21502HKR
 21504HKR
 21720HKR
 21721HKR
 21725HKR
 21503HKR
 21504HKR

AERO CHAMBER



THE WORLD'S BEST HEADER! It's a tall statement, but true. Hooker has been in the business of making the best headers since the 1960s when Hooker honed its teeth on factory big block muscle cars, making premium quality headers for the street, strip and oval track. Hooker has branched its product line out to include headers and exhaust systems to include many "non-race" applications such as RVs, tow vehicles, off-road vehicles and many daily-drivers.



COMPETITION HEADERS

The Low-Cost Way To High Performance.

Hooker Competition Headers offer the best value in the high performance header market. Designed for the value-conscious buyer who is running either a "stock" or "mildly-modified" engine. Hooker Competition Headers offer premium features at a very competitive price. Made of durable 16 gauge mild steel tubing, the design utilizes a long transition collector design to reduce back pressure and increase exhaust flow.

FEATURES:

- Long transition collectors to increase exhaust flow
- Extra thick collectors for better seal
- Available in baked on Black paint or Metallic Ceramic finish



YEARS	ENGINES	PART NO.	METALLIC CERAMIC COATING	REDUCER	P/S	P/B	A/C	TRANSMISSION STAND. COL.	FL	AUTO COL.	FL	TUBE SIZE & LENGTH O.D.	COLL. SIZE O.D.	COLL. LENG
Chevy Chevelle, El Camino														
64-87	265-400	2451HKR	2451-1HKR	11030HKR	Y	Y	1*	Y	Y	Y	Y	1-5/8" X 30"	3"	8"
64-87	283-400	2466HKR	2466-1HKR	11030HKR	Y	Y	1*	N	N	Y	Y	1-5/8"	3"	
64-74	396-454	2455HKR	2455-1HKR	11035HKR	Y	Y	Y	Y	Y	Y	Y	2" X 30"	3-1/2"	10"
Chevy Monte Carlo														
70-87	265-400	2451HKR	2451-1HKR	11030HKR	Y	Y	1*	N	N	Y	Y	1-5/8" X 30"	3"	8"
70-87	283-400	2466HKR	2466-1HKR	11030HKR	Y	Y	1*	N	N	Y	Y	1-5/8"	3"	
70-74	396-454	2455HKR	2455-1HKR	11035HKR	Y	Y	Y	N	N	Y	Y	2" X 30"	3-1/2"	10"
Chevy Chevy II, Nova														
68-79	265-400	2451HKR	2451-1HKR	11030HKR	Y	Y	1*	Y	Y	Y	Y	1-5/8" X 30"	3"	8"
68-79	283-400	2466HKR	2466-1HKR	11030HKR	N	Y	1*	N	N	Y	Y	1-5/8"	3"	
68-74	396-454	2457HKR	2457-1HKR	11035HKR	Y	Y	Y	Y	Y	Y	Y	2" X 30"	3-1/2"	10"
Chevy Camaro														
98-99	350 LS1	2468HKR	2468-1HKR	11030HKR	Y	Y	Y	N	Y	N	Y	1-3/4" X 32"	3"	10"
00-02	350 LS1	2469HKR	2468-1HKR	11030HKR	Y	Y	Y	N	Y	N	Y	1-3/4" X 32"	3"	10"
67-69	265-400	2451HKR	2451-1HKR	11030HKR	Y	Y	1*	N	Y	Y	Y	1-5/8" X 30"	3"	8"
67-69	396-454	2457HKR	2457-1HKR	11035HKR	Y	Y	Y	N	Y	Y	Y	2" X 27"	3-1/2"	10"
67-81	283-400	2466HKR	2466-1HKR	11030HKR	Y	Y	1*	N	N	Y	Y	1-5/8"	3"	
70-81	265-400	2451HKR	2451-1HKR	11030HKR	Y	Y	1*	N	Y	Y	Y	1-5/8" X 30"	3"	8"
82-92	265-400	2460HKR	2460-1HKR	11030HKR	Y	Y	Y	N	Y	N	Y	1-5/8" X 15"	3"	4"
70-72	396-454	2455HKR	2455-1HKR	11035HKR	Y	Y	Y	N	Y	N	Y	2" X 30"	3-1/2"	10"
Chevy Blazer, Suburban, Jimmy, Yukon, 1-Ton Crew Cab (2WD)														
69-91	265-400	2452HKR	2452-1HKR	11025HKR	Y	Y	Y	Y	Y	Y	N	1-5/8" X 27"	2-1/2"	8"
Dodge/Plymouth B & E Bodies - Passenger car & wagon														
67-74	383-440	5903HKR	5903-1HKR	11030HKR	Y	Y	Y	Y	Y	Y	Y	1-7/8" x 36"	3"	8"
Dodge/Plymouth All B & E (A& F Bodies)														
67-82	273-360	5901HKR	5901-1HKR	11030HKR	Y	Y	Y	N	Y	Y	Y	1-5/8" x 34"	3"	8"
Dodge/Plymouth Challenger/Barracuda														
70-74	383-440	5903HKR	5903-1HKR	11030HKR	Y	Y	Y	Y	Y	Y	Y	1-7/8" x 36"	3"	8"
Ford Falcon, Fairlane														
66-73	255-302W	6901HKR	6901-1HKR	11030HKR	2*	Y	Y	N	Y	Y	Y	1-5/8" X 28"	3"	8"
Ford Mustang, Cougar														
64-73	255-302W	6901HKR	6901-1HKR	11030HKR	2*	Y	Y	N	Y	N	Y	1-5/8" X 28"	3"	8"
Ford Mustang, Fairlane, Cougar														
67-73	351W	6901HKR	6901-1HKR	11030HKR	2*	Y	Y	N	N	N	Y	1-5/8" X 28"	3"	8"
Ford Maverick														
70-77	255-302W	6901HKR	6901-1HKR	11030HKR	2*	Y	Y	N	Y	N	Y	1-5/8" X 28"	3"	8"
Oldsmobile Cutlass/442														
65-75	400-455	3902HKR	3902-1HKR	11030HKR	Y	Y	Y	N	Y	Y	Y	1-3/4" x 27"	3"	8"
68-75	350-403	3901HKR	3901-1HKR	11025HKR	Y	Y	Y	N	Y	Y	N	1-5/8" x 29"	2-1/2"	8"
Pontiac Firebird, Trans Am														
98-99	350 LS1	2468HKR	2468-1HKR	11030HKR	Y	Y	Y	N	Y	N	Y	1-3/4" X 32"	3"	10"
00-02	350 LS1	2469HKR	2469-1HKR	11030HKR	Y	Y	Y	N	Y	N	Y	1-3/4" X 32"	3"	10"
70-79	350-455	4901HKR	4901-1HKR	11030HKR	Y	Y	Y	N	Y	N	Y	1-5/8" X 28"	3"	8"
Pontiac GTO, Le Mans, Grand Am														
64-75	326-455	4901HKR	4901-1HKR	11030HKR	Y	Y	Y	N	Y	Y	Y	1-5/8" X 28"	3"	8"

*Footnotes 1 - Installation requires A/C bracket #10925 left side or #10926 right side. On '79 & later vehicles with short compressors, use stock bracket. 2 - Installation requires power steering bracket #10961.

Some parts are not legal for sale or use in California on any pollution controlled motor vehicle.

Edelbrock

EDELBROCK Exhaust Systems

State-of-the-Art Testing Proves Performance Gains

Edelbrock engineers use a sophisticated SuperFlow SF-840 chassis dyno along with radar gun test equipment and on-board diagnostics to do extensive vehicle power and acceleration tests on vehicles equipped with their exhaust system components. These tests verify that each component has been designed and optimized to produce throttle response, power band improvement, and torque. More torque - it's tested!



65743 Ti-Tech Finish

STREET ROD BLOCK-HUGGER HEADERS

These new headers are designed for popular street rod applications. Edelbrock Block-Hugger headers have outstanding performance features such as mandrel-bent tubes with 3/8" laser-cut port and collector flanges. Made of durable 16-gauge cold rolled steel tubing and include a graphite conical D-nut gasket for a better seal that won't burn out. All necessary hardware and gaskets are included.

APPLICATION	CERAMIC FINISH	TI-TECH FINISH
SB Chevy with standard ports (1-5/8" primary, 2-1/2" elbow)	65742	65743
SB Chevy with D-port heads including LT1/LT4, Fast Burn, and Edelbrock E-Tec & Vortec heads (1-5/8" primary, 3" elbow)	65752	65753
Chevy LS Series (1-3/4" primary, 3" elbow)	65762	65763
Chevy 348/409 "W-Series", 1958-64 Impala, Bel Air and Biscayne or Street Rods (1-3/4" primary, 3" elbow)	65722	65723
SB Ford (1-5/8" primary, 2-1/2" elbow)	65772	65773



68722 Ceramic Finish

Titanium Satin Finish

TI-TECH

TUBULAR EXHAUST SYSTEMS

Boost performance and driveability in your vehicle with high-quality Edelbrock Tubular Exhaust System headers. In some cases, you'll shave up to a full second off your acceleration time from 0 to 60 mph because the Edelbrock design improves your engine's ability to breathe. Mileage may also improve, as your engine becomes more fuel efficient. Best of all, our Tubular Exhaust System (TES®) headers give you all this performance within acceptable emissions levels and without voiding the new vehicle warranties. TES® headers accept all stock emissions equipment, leaving them fully operational and most systems are complete from the heads to the catalytic converter. The outstanding features built into every Edelbrock exhaust delivers the best in quality and performance.

CHEVROLET / PONTIAC

DESCRIPTION	YEAR	ENGINE	FOOTNOTE	CERAMIC FINISH	TI-TECH FINISH
Standard 5.0L	82-87	5.0L LG-4, 2-1/4" inlet slip-on cat.		68712	68713
H.O. (High Output)	83-86	5.0L (H.O.), 4-bbl. carb, 4-bolt cat.		68742	68743
IROC, Z-28, Formula	86-90	5.0/5.7L T.P.I., 3" inlet slip-on single cat.		68722	68723
RS & Formula	88-92	5.0L T.B.I., 2-1/4" inlet slip-on cat.		68752	68753
IROC, Z-28, T/A, Formula	89-92	5.0/5.7L T.P.I., dual-cat.	A	68762	68763
Z-28, T/A & Formula	94-95	5.7L, LT1, single cat.	A	68942	68943
Z-28, T/A & Formula	95-97	5.7L, LT1, dual-cat.	A,B	66022	66023
Camaro/Firebird	98-99	LS1	A,B	66722	66723
Impala SS	94-96	5.7L, LT1	A,B	66032	66033

TES Footnotes:

- (A) Requires cutting and welding for installation.
(B) 409 stainless steel for heavy-duty applications and towing.



5646



Cat-Back Footnotes::

- (E) Includes brushed stainless steel tailpipes
(L) All stainless steel system
(N) Axle back only

EDELBROCK CAT-BACK SYSTEMS

Edelbrock Cat-Back Systems include our new SDT muffler for a complete, dyno-tuned system. The 16-gauge aluminized or 17-gauge stainless tubing provides outstanding durability and mandrel bends offer excellent flow characteristics. Some late-model truck applications come standard with brushed stainless steel tailpipes. Other truck applications come in three outlet options with chrome-plated round intercooled or flat oval exhaust tips available separately. Stainless steel round intercooled tips are also available. All Edelbrock Cat-Back Systems replace O.E. exhaust systems and are street legal in all 50-states.

CHEVROLET/PONTIAC PASSENGER CARS

APPLICATION	YEAR	ENGINE	NOTES	TUBE SIZE	REAR EXIT
Camaro/Firebird	86-92	5.0/5.7L	single cat., 2-3/4" stock I-pipe	3" in - dual 2-1/2" out	5672
Camaro/Firebird	83-92	5.0L	2-1/2" stock I-pipe	3" in - dual 2-1/2" out	5673
Camaro/Firebird	93-95	5.7L	single catalytic converter	3" in - dual 2-1/2" out	5674
Camaro/Firebird	98-02	LS1	dual catalytic converters	2-3/4" in - dual 2-1/2" out	5772
Impala SS	94-96	5.7L	dual exhaust dual	2-1/2" in/out	5670

CHRYSLER/DODGE

APPLICATION	YEAR	ENGINE	NOTES	TUBE SIZE	REAR EXIT
Charger/Magnum/300C	05-06	5.7L	dual exhaust	dual 2-1/2", 3-1/2" tailpipes	5719

LATE-MODEL MUSTANGS

APPLICATION	YEAR	ENGINE	TUBE SIZE	STOCK EXIT
Mustang GT (E)	1986	5.0L	2-1/2"	5646
Mustang GT	87-93	5.0L	2-1/2"	5645
Mustang LX (E)	86-93	5.0L	2-1/2"	5646
Mustang GT (E)	94-97	4.6/5.0L	2-1/2"	5647
Mustang GT (E)	99-01	4.6L	3"	5649
Mustang (E, L, N)	05-08	4.0L	2-1/2" - 3" out	5694
Mustang (E, N)	05-08	4.6L	2-1/2" - 3" out	5644
Mustang GT (E, L, N)	05-08	4.6L	2-1/2" - 3" out	5654

Edelbrock Exhaust Retro-Fit Kits

Edelbrock recognizes you want the power, economy, and drivability of the LS series engine in your vehicle. They have introduced several retro-fit and conversion headers, exhaust systems, and engine mount kits that make it easy to drop an LS into your street rod, muscle car, or custom. Made in the USA by Edelbrock for quality and performance.



The Most Complete Retro-Fit Kit for LS Series Engines in Classic GM Muscle Cars!



COMPLETE RETRO-FIT KIT for GM Muscle Cars

This complete conversion kit gives you everything you need to install a GM LS or LM engine into the chassis of your muscle car. Each kit consists of Edelbrock headers, header-back exhaust system and engine mount kit. This conversion kit features original equipment-style fit, high quality materials and Edelbrock workmanship for unrivaled results and classic muscle car sound.

APPLICATION	PART NO.
Retro-Fit Kit for 1964-'67 GM A-Body vehicles NEW!	6758
Retro-Fit Kit for 1968-'72 GM A-Body vehicles	6754
Retro-Fit Kit for 1967-'69 GM F-Body vehicles NEW!	6759
Retro-Fit Kit for 1970-'81 GM F-Body vehicles NEW!	6755



UNIVERSAL CONVERSION SHORTY HEADERS for GM LS1 V8 to Street Rod

Universal Shorty headers that can be used when (converting) installing an LS1 V8 into an early street rod or muscle car. The primary tubes are 1 5/8" dia. mild steel. The port flange is 3/8" thick laser cut hot rolled steel. The headers utilize OE style collectors with stamped OE style flanges and D-nut gaskets for the ultimate leak-free seal. A pair of short extension tubes (approx. 5" long) and flanges are included to simplify fabrication of the exhaust system. These headers are very compact and will fit a lot of different chassis.

APPLICATION	PART NO.
LS1 V8 to Street Rod (Ceramic Coated)	65172
LS1 V8 to Street Rod (Ti-Tech Coated)	65173



RETRO-FIT HEADERS for GM LS Series Engines in GM A-Body, F-Body & X-Body Vehicles

These high quality engine conversion headers are made from 409 stainless steel tubing with 3/8" thick port and collector flanges. They are Ti-TECH coated for corrosion resistance and durability. The collectors use a durable graphite D-nut gasket rather than a leakage-prone 3-bolt collector and paper gasket. LS Series Conversion Headers have 1-3/4" primary tubes stepped up 1-7/8" for maximum flow and outstanding power, and must be used with matching LS series engine mount adapter Kit #6701.

APPLICATION	PART NO.
1964-'67 GM A-Body with LS Series V8 NEW!	65063
1968-'72 GM A-Body, 1970-'81 GM F-Body and 1975-'79 X-Body with LS Series V8	65073
1967-'69 GM F-Body and 1968-74 X-Body with LS Series V8 NEW!	65043



ENGINE MOUNT KITS

for GM LS Series Engines in GM A-Body & F-Body Vehicles

Manufactured from 1/2" thick HR steel and zinc plated for durability. Can also be used for various applications where an LS engine is being transplanted into a custom hot rod. Complete installation hardware included.

APPLICATION	PART NO.
1964-'72 GM A-Body, 1970-'81 GM F-Body and 1975-'79 X-Body with LS Series V8	6701
1967-'69 GM F-Body and 1968-'74 X-Body with LS Series V8 NEW!	6706



What Body Type is My GM Vehicle?

A-Body: '64-'81 Chevelle, Malibu, El Camino, Concourse Wagon, Monte Carlo, and Monte Carlo SS; Buick Special, Regal, Century and Grand Sport; Pontiac Lemans, Grand Am; Oldsmobile Cutlass, 442, Vista Cruiser Wagon

F-Body: '67-'02 Camaro and Firebird

G-Body: '68-'72 Grand Prix; '82-'88 Malibu, Malibu Wagon, Monte Carlo, Monte Carlo SS & LS, Regal, Grand National, Bonneville, Grand Prix, Cutlass

X-Body: '68-'79 Nova, Omega, Apollo and Ventura

Engine Swap Headers & Accessories

Hooker has been making the best headers since the 1960s when Hooker honed its teeth on factory big block muscle cars, making premium quality headers for the street, strip and oval track. Hooker has branched its product line out to include headers and exhaust systems to include many "non-race" applications such as RVs, tow vehicles, off-road vehicles and many daily-drivers.



LS1 FULL-LENGTH SWAP HEADERS

Tuned-length primary tubes for maximum exhaust scavenging and velocity. Mandrel-bent tubing for smooth exhaust flow. Light weight & sturdy 18 gauge tubing. Long transition collector for decreased back pressure. Works with all small block Chevy mounts and frame towers.

APPLICATION	PART NO.
67-69 Camaro/Firebird	2288HKR
66-72 Chevelle/El Camino/ Monte Carlo & Sprint	2289HKR



2005-06 MUSTANG HEADERS

Tuned-length primary tubes for maximum exhaust scavenging and velocity. Mandrel-bent tubing for smooth exhaust flow. Light weight & sturdy 18 gauge tubing. Industry's best welds for durability. Designed for optimal performance. All necessary hardware included for a complete installation.

APPLICATION	PART NO.
05-06 Mustang GT 4.6L - Shorty, Black	6138HKR
05-06 Mustang 4.6L (3V) - Black	6233HKR
05-06 Mustang 4.6L (3V) Ceramic Coated	6233-1HKR

WELD-UP HEADER KITS

Hooker Weld-up kits work great for racers who need to build custom headers when a specific fit tuned Super header is not available. Kits come with mandrel bent one piece primaries, two 5/16" flanges and precision formed collectors incorporating unique long transition to provide better flow.



APPLICATION	PART NO.
SBC 262-400, 2" x 36" Tube Size	2956HKR
BBC 396-502, 2.125" x 40" Tube Size	2953HKR
BBC 396-502, 2.25" x 45" Tube Size	2957HKR
BBC 396-502, 2.375" x 45" Tube Size	2959HKR



HEMI SWAP HEADERS

Fits Dodge/Plymouth 68-74 Charger, RT, Coronet, SuperBee, RoadRunner, GTX, Belvedere, Satellite (B Bodies) & 70-74 Barracuda, Cuda, Challenger (E Bodies) with 5.7L & Hemi & 6.1L.

Part No. 5020HKR Black Painted
Also available in Ceramic Coated as shown.



LS1 BLOCK HUGGER HEADERS

Hooker's high style design is tuned for low & midrange street performance. Strong torque multiplication in an engine's street operation range is from idle (800 RPM) to around 3,500 RPM. Tight-tuck tube design for fit with narrow street rod frames. Collector exit is parallel with oil pan for maximum ground clearance. Collectors are positioned for maximum starter and engine mount clearance.

APPLICATION	PART NO.
LS1 Block Headers - Black Painted	2312HKR
LS1 Block Headers - Ceramic Coated	2313HKR
LS1 Block Headers - Polished Stainless	2314HKR
LS1 Block Headers - Chrome Plated	2315HKR



BOLT-ON COLLECTOR EXTENSION

Designed for use with 3-bolt collector rings, these 18" long extensions enable the racer to adjust his torque curve to suit track conditions. The kit contains two extensions, matched gaskets and six nuts and bolts.

DESCRIPTION	PART NO.
!8" Length, 3" Collector O.D.	11230HKR
!8" Length, 3.5" Collector O.D.	11235HKR



CAMARO/FIREBIRD LS1 HEADERS (Competition)

Intended for the street enthusiast who wants the best performing header out there. These headers maintain the high value standards Hooker headers are known for with sturdy 16 gauge construction and our new 3/8" head flange for superior sealing. These Headers are easy to install, offer good ground clearance and come complete with gaskets and hardware kit.

APPLICATION	PART NO.
98-99 1-3/4" - Black Painted	2468HKR
98-99 1-3/4" - Ceramic Coated	2468-1HKR
00-02 1-3/4" - Black Painted	2469HKR
00-02 1-3/4" - Ceramic Coated	2469-1HKR



S-10 SWAP HEADERS

(Super Competition)

Hooker Super Competition headers feature tuned primary tubes to create optimum pressure between the intake and exhaust systems. Hooker Super Competition headers include premium exhaust gaskets and new mounting bolts.

APPLICATION	PART NO.
82-93 S10/S15, 265-400 2WD - Black	2837HKR
82-93 S10/S15, 265-400 4WD - Black	2839HKR



3 BOLT FLANGE REDUCER

Bolt to the collector ring, and weld on the tailpipe. If you have a header without the collector ring, use Hooker slip-on reducers. They're sized to slip over the collector and weld to the exhaust pipe.

DESCRIPTION	PART NO.
2.5" Dia. collector to 2" tailpipe	11025HKR
3.0" Dia. collector to 2-1/8" tailpipe	11030HKR
3.5" Dia. collector to 2.5" tailpipe	11035HKR
2.5" Dia. collector to 3" tailpipe	11040HKR

BBK Performance Headers

BBK's CNC series headers, with quality features as fully computerized mandrel-bent heavy-gauge tubing, precision die-stamped and laser-cut flanges, and our optional Polished Ceramic Finish, eliminate all the nightmares that used to be associated with header installs. Built to fit, built to last, built to seal, BBK headers create horsepower, not headaches!



MUSTANG SHORTY HEADERS

- Available in un-equal & equal-length
- Standard chrome — optional polished ceramic Computer mandrel-bent 1-5/8" tubing
- Bolt-on 10-20 horsepower 5.0l
- Available for all 1986-95 liter models

APPLICATION	PART NO.
1-5/8" Shorty Header Set—Chrome (1986-93 5.0 Mustang)	1515
1-5/8" Shorty Header Set—Ceramic (1986-93 5.0 Mustang)	15150
1-5/8" Equal-Length Header Set—Chrome (1986-93 5.0 Mustang)	1512
1-5/8" Equal-Length Header Set—Ceramic (1986-93 5.0 Mustang)	15120
1-5/8" Shorty Header Set—Chrome (1994-95 5.0 Mustang)	1525
1-5/8" Shorty Header Set—Ceramic (1994-95 5.0 Mustang)	15250
1-5/8" Equal-Length Header Set—Chrome (1994-95 5.0 Mustang)	1529
1-5/8" Equal-Length Header Set—Ceramic (1994-95 5.0 Mustang)	15290



2005-07 MUSTANG GT PERFORMANCE HEADERS

- Available in tuned-length Shorty & Full length models
- Matching 2-3/4" X-pipes also available

APPLICATION	PART NO.
2005-07 Mustang GT 1-5/8" Full-Lengths (Chrome)	1641
2005-07 Mustang GT 1-5/8" Full-Lengths (Ceramic)	16410
2005-07 Mustang GT 2-3/4" Off-Road X-Pipe	1769
2005-07 Mustang GT 2-3/4" X-Pipe with Converters	1770
2005-07 Mustang Off-Road X-Pipe for Full-Lengths	1636
2005-07 Mustang Off-Road with Converters for Full-Lengths	1637

4.6 GT TUNED-LENGTH SHORTY HEADERS

- 1-5/8" CNC mandrel-bent
- Heavy gauge tubing
- Custom high-flowing cast
- Merge chamber
- Direct bolt-on — all gaskets
- And hardware included



Our exhaust engineers have done the impossible with these all-new tuned-length performance headers for the popular 4.6 liter Mustang GT.

APPLICATION	PART NO.
1-5/8" Tuned-Length Shorty Headers 96-04 4.6L GT (Chrome)	1615
1-5/8" Tuned-Length Shorty Headers 96-04 4.6L GT (Ceramic)	16150
1-5/8" Tuned-Length Shorty Headers 2005-07 GT (Chrome)	1612
1-5/8" Tuned-Length Shorty Headers 2005-07 GT (Ceramic)	16120

MUSTANG 302/351 FULL-LENGTH HEADERS

- Add 18-20 hp
- Direct bolt-on design
- 3/8" thick laser-cut flanges
- Computer mandrel-bent tubing
- Much improved low-end response



APPLICATION	PART NO.
1-5/8" Full-Length Headers—Chrome (1979-93 5.0 Mustang)	1516
1-5/8" Full-Length Headers—Ceramic (1979-93 5.0 Mustang)	15160
1-5/8" Full-Length Headers—Chrome (1994-95 5.0 Mustang)	1519
1-5/8" Full-Length Headers—Ceramic (1994-95 5.0 Mustang)	15190
1-3/4" Full-Length Headers—Chrome (1979-93 5.0 Mustang)	1594
1-3/4" Full-Length Headers—Ceramic (1979-93 5.0 Mustang)	15940
1-3/4" Full-Length Headers—Chrome (1979-93 351 Mustang Swap)	1569
1-3/4" Full-Length Headers—Ceramic (1979-93 351 Mustang Swap)	15690

4.6 GT/COBRA FULL-LENGTH HEADERS

- Adds 18-24 hp to the wheels
- Direct bolt-on design
- Super high-quality construction



APPLICATION	PART NO.
1-5/8" Full-Length Header Set—Chrome (1996-98 4.6 Cobra Mustang)	1532
1-5/8" Full-Length Header Set—Ceramic (1996-98 4.6 Cobra Mustang)	15320
1-5/8" Full-Length Header Set—Chrome (1999-04 4.6 Cobra Mustang)	1533
1-5/8" Full-Length Header Set—Ceramic (1999-04 4.6 Cobra Mustang)	15330
1-5/8" Full-Length Header Set—Chrome (1996-2004 4.6 GT Mustang)	1541
1-5/8" Full-Length Header Set—Ceramic (1996-2004 4.6 GT Mustang)	15410

MATCHING MID-PIPES

- 2-1/2" mandrel-bent tubing
- Short Mid-Pipes to fit BBK full-lengths
- Available with catalytic converters or off-road race pipes
- Not street legal



APPLICATION	OFF-ROAD	w/Converter
1979-93 Mustang H Mid Pipe 2-1/2"	1510	1509
1979-93 Mustang X Mid Pipe 2-1/2"	1660	1659
1994-95 Mustang X Mid Pipe 2-1/2"	1671	1672
1996-04 Mustang GT/Cobra X Mid Pipe 2-1/2"	1635	1638
1996-04 Mustang H Mid Pipe 2-1/2"	1535	1538
2005-08 Mustang GT X Mid Pipe 2-1/2"	1636	1637
02 Wire Harness Extensions (pair)		P/N 1676

LS-1 CORVETTE/CAMARO/FIREBIRD

BBK's popular 1-3/4" CNC-Series Performance Headers are now available to owners of the '97-'04 C-5 Corvette and Camaro/Firebird. All units come standard with a beautiful polished ceramic finish as well as all gaskets and hardware. Installation can be done in approximately 4-6 hours with hand tools and a gain of 10-13 rear wheel HP is common.



APPLICATION	PART NO.
Corvette	
1997-99 Corvette Header System (Polished Ceramic)	40000
2000 Corvette Header System (Polished Ceramic)	40010
2001-04 Corvette Header System (Polished Ceramic)	40040
Camaro/Firebird LS1	
1998-99 LS-1 F-Body 1-3/4" Performance Headers (Chrome)	4002
1998-99 LS-1 F-Body 1-3/4" Performance Headers (Ceramic)	40020
2001-02 LS-1 F-Body 1-3/4" Performance Headers (Chrome)	4003
2001-02 LS-1 F-Body 1-3/4" Performance Headers (Ceramic)	40030

*#4006 and 40060 are equipped with air fitting connectors. Depending on the State, some 4.8, 5.3 models will use this application.



FLOWTECH Headers

Flowtech's header offering includes standard/ceramic headers, block hugger headers and Toobs, race readies and Y-pipes, IMCA-style race car headers, as well as the popular Flowtech Terminator and the new Afterburner Turbo Chamber Headers. Flowtech headers, mufflers, cutouts, exhaust systems and accessories are the absolute best value you can buy.



FLOWTECH CERAMIC HEADERS

All the great features of Standard Finish Headers with these added benefits. Finished with a specially formulated, NASA developed silver luster ceramic coating for longer rust & corrosion resistance. Made in USA. Not all applications listed.

FLOWTECH STANDARD HEADERS

Formed from specially selected .049 cold roll flash controlled tubing with thick, mandrel-formed Power Plenum™ collector. All ports are precisely fitted & finished with sturdy leakproof O-ringed port seals. Includes all mounting hardware. Electrostatically applied PPG satin black finish.



APPLICATION PASSENGER CAR	ENGINE	PRI TUBE COL SIZE	A/C	AUTO COL FLR	STD COL FLR	FOOTNOTES	FLOWTECH STANDARD	FLOWTECH CERAMIC
Buick								
78-87 Regal	283-400 Chev	1-1/2 x 2-1/2	Y	N	Y	1,3,4,54,58,66,90	11102FLT	31102FLT
Chevrolet								
00-02 Camaro	LS1	1-3/4 x 3	Y	N	Y	66,234,236	11134FLT	11134-1FLT
98-99 Camaro	LS1	1-3/4 x 3	Y	N	Y	66,234,236	11133FLT	11133-1FLT
Y-Pipe for 11133FLT & 11134FLT							11133YFLT	11133Y-1FLT
67-69 Camaro	283-400	1-5/8 x 3	12	Y	Y	1,4,32,58	11100FLT	31100FLT
67-81 Camaro	283-400	1-5/8 x 3	23	Y	Y	1,3,4,12,14,15,54	11108FLT	31108FLT
70-81 Camaro	283-400	1-5/8 x 3	23	Y	Y	1,3,4,6,31,58	11100FLT	31100FLT
82-91 Camaro	283-400	1-1/2 x 2-1/2	Y	N	Y	1,3,4,54,58,66,90	11102FLT	31102FLT
70-72 Camaro	396-454	1-3/4 x 3	Y	N	Y	1,4	11130FLT	11130-1FLT
67-81 Camaro	283-400	1-5/8 x 3	23	Y	Y	1,4	11108FLT	31108FLT
82-89 Camaro Z/28	305	1-1/2 x 2-1/2	Y	N	Y	54	11114FLT	31114FLT
82-92 Camaro Z/28	305-350	1-1/2 x 2-1/2	Y	N	Y	6,54	11116FLT	31116FLT
64-77 Chevelle	283-400	1-5/8 x 3	23	Y	Y	1,4,32,58	11100FLT	31100FLT
68-87 Chevelle	283-400	1-5/8 x 3	23	Y	Y	1,3,4,14,15,54	11108FLT	31108FLT
78-87 Chevelle	283-400	1-1/2 x 2-1/2	Y	Y	Y	1,3,4,54,66,90	11102FLT	31102FLT
64-74 Chevelle	396-454	1-3/4 x 3	Y	N	43	1,3,4	11130FLT	31130FLT
68-79 Chevy II/Nova	282-400	1-5/8 x 3	N	Y	Y	1,3,4,14,54	11108FLT	31108FLT
68-79 Chevy II/Nova	283-400	1-5/8 x 3	23	Y	Y	1,3,4,32,58	11100FLT	31100FLT
70-77 Monte Carlo	305-400	1-5/8 x 3	23	Y	Y	1,3,4,6,58	11100FLT	31100FLT
70-87 Monte Carlo	283-400	1-5/8 x 3	23	Y	Y	1,3,4,14,15,54	11108FLT	31108FLT
65-70 Passenger	283-400	1-5/8 x 3	23	Y	Y	1,4,32,58	11100FLT	31100FLT
71-77 Passenger	283-400	1-5/8 x 3	23	Y	Y	1,3,4,58	11100FLT	31100FLT
71-91 Passenger	283-400	1-5/8 x 3	23	Y	Y	1,3,4,14,15,54	11108FLT	31108FLT
78-89 Passenger	305-400	1-5/8 x 3	23	Y	Y	1,3,4,6,58	11100FLT	31100FLT
71-74 Passenger	396-454	1-3/4 x 3	Y	N	Y	1,4	11130FLT	31130FLT
Dodge/Plymouth								
76-79 Aspen	273-360	1-5/8 x 3	Y	Y	Y	3,4,8,22	13100FLT	33100FLT
67-74 Barracuda	273-360	1-5/8 x 3	Y	Y	Y	4,8,22	13100FLT	33100FLT
67-76 Belvedere	272-360	1-5/8 x 3	Y	Y	Y	3,4,8,22	13100FLT	33100FLT
70-77 Challenger	273-360	1-5/8 x 3	Y	Y	Y	3,4,8,22	13100FLT	33100FLT
66-77 Charger & Coronet	273-360	1-5/8 x 3	Y	Y	Y	3,4,8,22	13100FLT	33100FLT
67-76 Dart & Valiant	273-360	1-5/8 x 3	Y	Y	Y	4,8,22	13100FLT	33100FLT
70-76 Demon & Duster	273-360	1-5/8 x 3	Y	Y	Y	3,4,8,22	13100FLT	33100FLT
67-76 GTX, R/T, Satellite	273-360	1-5/8 x 3	Y	Y	Y	3,4,8,22	13100FLT	33100FLT
67-78 Road Runner	273-360	1-5/8 x 3	Y	Y	Y	3,4,8,22	13100FLT	33100FLT
67-74 Super Bee	273-360	1-5/8 x 3	Y	Y	Y	4,8,22	13100FLT	33100FLT
67-69 Valiant	273-360	1-5/8 x 3	Y	Y	Y	4,8,22	13100FLT	33100FLT
76-81 Volare	273-360	1-5/8 x 3	Y	Y	Y	3,4,8,22	13100FLT	33100FLT
Ford								
05-07 Mustang (Shorty Smog)	4.6L 2V						----	91671-1FLT
96-03 Mustang	4.6L 2V	1-5/8 x 3	Y	N	Y	236,250	12115FLT	12115-1FLT
94-95 Mustang	302W	1-5/8 x OE	Y	N	Y	53	12112FLT	32112FLT
X-Pipe for 12115FLT							12115YFLT	
96-03 Mustang	4.6L 4V	1-5/8 x 3	Y	N	Y	236,250	12114FLT	12114-1FLT
X-Pipe for 12114FLT							12114YFLT	
64-70 Mustang	260-302W	1-5/8 x 3	Y	N	Y	4,5,20,67	12102FLT	32102FLT
79-93 Mustang	302W	1-5/8 x 3	Y	N	Y	3,4,66,70,71	12104FLT	32104FLT
86-93 Mustang GT/LX	302W	1-5/8 x OE	Y	N	Y	61,70,71	12110FLT	32110FLT
66-73 Fairlane	260-302W	1-1/2 x 3	Y	Y	Y	5,20,67	12000FLT	32000FLT

FLOWTECH Headers

Flowtech's header offering includes standard/ceramic headers, block hugger headers and Toobs, race readies and Y-pipes, IMCA-style race car headers, as well as the popular Flowtech Terminator and the new Afterburner Turbo Chamber Headers. Flowtech headers, mufflers, cutouts, exhaust systems and accessories are the absolute best value you can buy.



APPLICATION PASSENGER CAR	ENGINE	PRI TUBE COL SIZE	A/C	AUTO COL FLR	STD COL FLR	FOOTNOTES	FLOWTECH STANDARD	FLOWTECH CERAMIC
Mercury								
79-86 Capri	260-302W	1-5/8 x 3	Y	N Y	N Y	3,4,66,70,71	12104FLT	32104FLT
66-69 Comet	260-302W	1-5/8 x 3	Y	Y Y	N Y	4,5,20,67	12100FLT	32100FLT
71-73 Comet	351W	1-5/8 x 3	Y	N Y	N N	4,5,20,67	12100FLT	32100FLT
67-70 Cougar	260-302W	1-5/8 x 3	Y	N Y	N Y	4,5,20,67	12102FLT	32102FLT
71-73 Cougar	260-302W	1-5/8 x 3	Y	N Y	N N	4,5,20,67	12100FLT	32100FLT
69-73 Cougar	351W	1-5/8 x 3	Y	N Y	N N	4,5,20,67	12100FLT	32100FLT
68-73 Cyclone	260-302W	1-5/8 x 3	Y	Y Y	N Y	4,5,20,67	12100FLT	32100FLT
68-73 Montego	260-302W	1-5/8 x 3	Y	Y Y	N Y	4,5,20,67	12100FLT	32100FLT
Oldsmobile								
78-87 Cutlass	283-400 Chev	1-1/2 x 2-1/2	Y	Y Y	N Y	1,3,4,6,51,54,58	11102FLT	31102FLT
78-87 Cutlass	283-400 Chev	1-5/8 x 3	23	Y Y	N N	1,3,4,14,15,54	11108FLT	31108FLT
65-75 442	400-455	1-3/4 x 3	Y	Y Y	N Y	3	11154FLT	31154FLT
Pontiac								
00-02 Firebird	LS1	1-3/4 x 3	Y	N Y	N Y	66,234,236	11134FLT	11134-1FLT
98-99 Firebird	LS1	1-3/4 x 3	Y	N Y	N Y	66,234,236	11133FLT	11133-1FLT
Y-Pipe for 11133FLT & 11134FLT								
82-92 Firebird	305 Chev	1-1/2 x 2-1/2	Y	N Y	N Y	6,51,54,102,103,104,105	11114FLT	31114FLT
82-92 Firebird	305-350 Chev	1-1/2 x 2-1/2	Y	N Y	N Y	51,54,100,102,104	11116FLT	31116FLT
70-79 Firebird-TA	350-455	1-5/8 x 3	Y	N Y	N Y	3,4,27,37	11170FLT	31170FLT
82-90 Firebird-TA	283-400 Chev	1-1/2 x 2-1/2	Y	N Y	N Y	1,3,4,6,51,58,66	11102FLT	31102FLT
64-75 Grand Am, GTO, LeMans	326-455	1-5/8 x 3	Y	Y Y	N Y	3,4,27,37	11170FLT	31170FLT

Footnotes:

- Available w/A.I.R. inj. manifold welded in place. Add suffix "S" to the part number when ordering (not available w/ceramic finish headers)
- Must modify stock exhaust to retain catalytic converter system.
- Not legal for use on pollution controlled motor vehicles. Legal only for racing vehicles that will never be driven upon a highway. If you have any questions, please contact your FLOWTECH™ dealer.
- Can be modified to fit A.I.R. fittings in head
- Applications w/oxygen sensor use reducer #10105 for 2-1/2" 3-bolt flange or #10110 for 3" 3-bolt flange
- Will not fit with A.I.R. injection pump
- Will not fit 67-69 Camaro w/air conditioning
- Must modify rotary air conditioning bracket.
- Power steering equipped use bracket #10041 for installation
- On 83-84 4WD it is necessary to remove rubber stopper below starter
- It may be necessary to raise the automatic column cross shaft linkage by rotating mounting bracket on frame & transmission 180 degrees
- Installation requires FLOWTECH™ A/C bracket #10042. On 1979 & later vehicles equipped w/short compressor, use original bracket

- Will not fit Ram Air Vehicles
- Will fit "Low Boy" F-250's only. Manufactured after 2/1/77. The date of manufacture is located on the driver's side door frame
- Will not fit 68-72 w/Camper Special gas tanks
- Must modify lower A-arm support bracket on 79-81 models
- Pre-70 vehicles w/exhaust manifold mounted alternator/generator use bracket #10031
- End holes on head must be drilled & tapped to assure proper seal
- Fits C-30 Crew Cab type chassis only
- Chevrolet Small Block V-8 engine
- Stock replacement, bolts directly to factory head pipes
- Shorty style header, will also work on catalytic equipped vehicles, head pipe fabrication required
- Will not fit angle plug heads
- Equal length "tuned" shorty header bolts directly to factory H-pipes
- Header is equipped w/oxygen sensor fitting
- Will not fit C6 transmissions
- Must use original factory Big Block engine frame mounts & hardware
- Will fit with Dart/Windsor cylinder heads

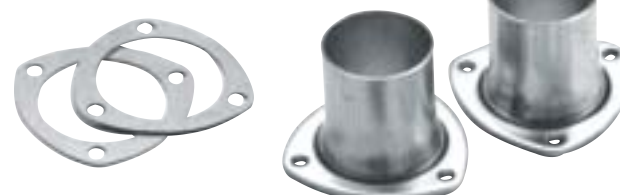
- Equal length "tuned" style header design
- Fits w/OE factory equipped style transmission only
- Catalytic converter compatible Y-pipe available separately. Add suffix "Y" to part number
- Will work with factory exhaust
- Modification to stock exhaust required to retain stock catalytic converter.
- On 1987 models, this header will only fit the 305 engine without the optional oil cooler
- Will fit Dart Sportsman/I angle plug heads
- Will not fit Cutlass "S" models
- Aluminized "Y" pipes that bolt to factory and aftermarket cat-backs is available under part# 11133YFLT
- Includes oxygen sensor extension harness(s)
- Aluminized "Y" pipes that bolt to factory and aftermarket cat-backs is available under part# 12115YFLT
- Y=YES, N=NO, O=NOT VERIFIED

BLOCK HUGGER HEADERS

Ideal for street rods & engine swaps where fit & finish is really important. Available in standard or ceramic coat finish for Chevy SB, BB & Ford SB.

Application	Flowtech I	Flowtech II
Chevy SB 265-400	11000FLT	31000FLT
Chevy BB 396-454	11030FLT	31030FLT
Ford 289-351W	12000FLT	32000FLT

REDUCERS



Application

- 3-Bolt 3" x 2-1/2"
- 3-Bolt 2-1/2" x 2-1/4"
- 3-Bolt 3" x 2-1/8"

Part No.

- 10004FLT
- 10005FLT
- 10007FLT

Some parts are not legal for sale or use in California on any pollution controlled motor vehicle.



Just about anyone can bend tubing and call themselves a header or exhaust company. But to design, test, and manufacture the best headers and exhaust systems in America, you've got to do more than just bend, weld and paint. You've got to be a company that specializes in total exhaust engineering for maximum performance, durability, appearance and sound...and that's what Holley's Flowtech™ brand is. Whenever you purchase any Flowtech brand product, you can be assured that it will meet every demand.



Get Maximum Power and Performance!



APPLICATION SHORTY HEADERS	ENGINE	PRI TUBE COL SIZE	A/C	AUTO COL	FLR	STD COL	FLR	FLOWTECH I STANDARD	FLOWTECH II CERAMIC
86-93 Unequal Length	5.0L	1-1/2 x OE	Y	N	Y	N	Y	12106FLT	----
86-93 Unequal Length	5.0L	1-5/8 x OE	Y	N	Y	N	Y	12107FLT	32107FL
94-95 Unequal Length	5.0L	1-5/8 x OE	Y	N	Y	N	Y	12112FLT	32112FLT
86-93 Equal Length	5.0L	1-5/8 x 17 x OE	Y	N	Y	N	Y	12110FLT	32110FLT

Equal length headers bolts directly to Factory H-Pipes. Will fit Dart/Windsor cylinder heads.

PRO-STANG OFF-ROAD H-PIPES

Perfect for off the highway racing such as drag racing, slaloms, road racing & trials competition.



Application

99-01 Mustang GT 4.6L
96-98 Mustang GT 4.6L
94-95 Mustang GT 5.0L
86-93 Mustang 5.0L
79-93 Mustang 5.0L when #12104 header is used

Part No.

53604FLT
53607FLT
53606FLT
53605FLT
53608FLT

WARLOCK™ UNIVERSAL CROSS PIPES w/FLOW INTENSIFIER CUT-OUTS

Universal fit cross pipe incorporates Flow Intensifier™ cut-outs for a quick and easy transition from "thru the mufflers" to "uncorked and unleashed". The cut-outs are configured to work in either a side or rear exit configuration. The removable Flow Intensifier incorporates a solid diversion tube with a concave surface that provides an inner pipe wall for smooth exhaust flow when installed. Remove the three wing nuts with the included track tool, slide the Intensifier out and you have a free flowing exhaust.



Application

Universal Cross Pipe w/Cut-Outs, 2.5" OD
Universal Cross Pipe w/Cut-Outs, 3.0" OD

Part No.

53630FLT
53631FLT

UNIVERSAL CROSS-PIPE KIT

FEATURES:

- Mandrel Bent Tubing
- Decreased Backpressure
- Increased Velocity
- Great Sound And Performance
- Adjustable cut-to-fit legs allows use on various applications and provides an easy installation
- Complete with collectors and u-bolts

Application

2.5" Diameter 23" x 55"
3.0" Diameter 24" x 55"

Part No.

53622FLT
53623FLT



UNIVERSAL X-TERMINATOR OFF ROAD CROSS PIPES

Mandrel bent 16 gauge aluminized tubing. Large 2-1/2" and 3" diameters for greater flow. More horsepower than aftermarket H-pipes. Awesome and distinctive sound.



Application

Universal Cross Pipe 2-1/2" Diameter
Universal Cross Pipe 3" Diameter

Part No.

53620FLT
53621FLT



RACE READIES

Exhaust cutouts, plugged for the street, wide open for the strip. Fits between header pipe & muffler. Quicker ET's, increased miles per hour. Free track tool with twin packs.

Description

2-1/2" 3-Bolt headers/pipes, w/two 2-1/2" 3-hole flanges
2-3/8" Slip fit only - 5.0L Mustang
3" 3-Bolt headers/pipes, w/two 2" 3-hole flanges

Part no.

53026FLT
53001FLT
53031FLT

REAL-SEAL EXHAUST SEALING SOLUTIONS



Constructed of separate layers of "dead soft" aluminum, Real-Seals provide a do-it-once solution that won't burn or blow out. Real-Seal gaskets will work when O-ringed gaskets won't because the "dead-soft" aluminum conforms to create a leak-proof seal. Real-Seals can also be easily trimmed for port-matching, and you can use them over and over again. Real-Seal gaskets are made of metal, they can be used again and again. They are water and weather resistant. Made in the USA.

Description

2-1/2" x 3-Hole Collector Gaskets
3" x 3-Hole Collector Gaskets
3-1/2" x 3-Hole Collector Gaskets
SB Chevy Flange Gasket Round
SB Chevy Flange Gasket Square
BB Chevy Flange Gasket Round
SB Ford Flange Gasket Square

Part No.

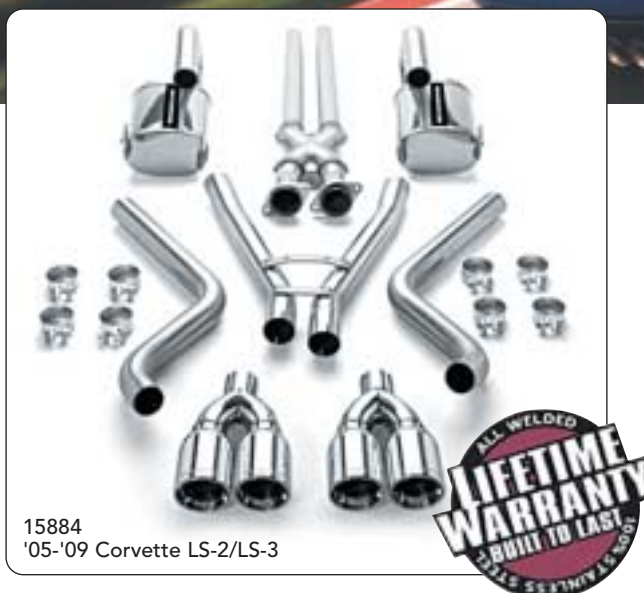
10024FLT
10025FLT
10026FLT
99150FLT
99150AFLT
99153FLT
99253FLT

GM American Muscle Exhaust

MagnaFlow performance exhaust systems are as rugged and reliable as the vehicle you drive. These exhaust kits feature OEM-style barbed hangers for easy installation, mandrel bends to prevent exhaust flow restrictions, and MagnaFlow's legendary straight-through, wide-open, stainless steel mufflers to provide a smooth, deep tone outside of the vehicle. They're also backed by MagnaFlow's lifetime warranty, so you will be able to enjoy a rich, powerful sound--from now on!

MAGNAFLOW

Performance
EXHAUST



PONTIAC

Make/Model	Part No.
FIREBIRD (F-BODY)	
'98-'02 5.7L V8, Trans-Am/Formula/WS-6/Firehawk, Quad Tip Dual	16723
'98-'02 5.7L V8, Trans-Am/Formula/WS-6/Firehawk, Rear Exit	15684
'98-'02 3.8L V6, Dual Rear Exit	15693
'93-'97 5.7L V8, Trans-Am/Formula/Firehawk, Rear Exit	15620
'93-'97 3.4L/3.8L V6, Dual Rear Exit	15694
'83-'93 5.0L/5.7L V8, Dual Rear Exit	16829
G8	
2009 6.2L V8, GXP	16873
'08-'09 6.0L V8, GT	16795
'08-'09 6.0L V8, GT Street Series (Quieter tone)	16887
GTO 05-06 6.0L V8, LS-2	
'05-'06 6.0L V8 LS-2 with Tru-X, Dual Exhaust	15892
GTO 2004 5.7L V8, LS-1	
2004 5.7L V8 LS-1 with Tru-X, Dual Same Side Rear Exit	15868
GTO (A-BODY) - CROSSMEMBER-BACK	
'68-'73 V8, 2.5" Dual Exhaust with Tru-X, exit options	15894
'68-'73 V8, 3" Dual Exhaust with Tru-X	15898
'64-'67 V8, 2.5" Dual Exhaust with Tru-X, exit options	15893
'64-'67 V8, 3" Dual Exhaust with Tru-X	15897
VENTURA (X-BODY) - CROSSMEMBER-BACK	
'71-'73 V8, 2.5" Dual Exhaust with Tru-X	16610
'71-'73 V8, 3" Dual Exhaust with Tru-X	16611

Make/Model	Part No.
CAMARO (F-BODY)	
'98-'02 5.7L V8, Z-28/SS, Center Quad Outlet	16846
'98-'02 5.7L V8, Z-28/SS, Quad Tip Dual Rear Exhaust	16723
'98-'02 5.7L V8, Z-28/SS, Dual Rear Exit	15684
'98-'02 3.8L V6, Dual Rear Exit	15693
'93-'97 5.7L V8, Z-28/SS, Rear Exit	15620
'93-'97 3.4L/3.8L V6, Dual Rear Exit	15694
'83-'92 5.0L/5.7L V8, Dual Rear Exit	16829
	Manifold Pipes Exhaust
'86-'89 5.0L/5.7L V8, Dual Rear Exit	16450 16829
'75-'79 5.0L/5.7L V8, Dual Rear Exit	16447 16828 ²
'70-'74 16 & V8, 2.5" Dual Rear Exit	
3-Bolt Flange, 396 ci	16435 ¹ 16826 ²
3-Bolt Flange, 307/350 ci	16434 ¹ 16826 ²
'70-'74 16 & V8, 3" Dual Exhaust w/Tru-X Crossmember-back	
3-Bolt Flange, 396 ci	16435 ¹ 15899 ²
3-Bolt Flange, 307/350 ci	16434 ¹ 15899 ²
'67-'69 V8, 2.5" Dual Exhaust w/Tru-X, Transverse muffler, Crossmember-back	
3-Bolt Flange, 396/427 ci	16435 ¹ 15895 ²
3-Bolt Flange, 302/307/327/350 ci	16434 ¹ 15895 ²
'67-'69 V8, 2.5" Dual Exhaust w/Tru-X, Transverse muffler, Crossmember-back	
3-Bolt Flange, 396/427 ci	16435 ¹ 15895 ²
3-Bolt Flange, 302/307/327/350 ci	16434 ¹ 15895 ²
'67-'69 V8, 3" Dual Exhaust w/Tru-X, Crossmember-back	
3-Bolt Flange, 396/427 ci	16435 ¹ 15899 ²
3-Bolt Flange, 302/307/327/350 ci	16434 ¹ 15899 ²

¹Manifold Pipe Connections are 2.5" and inlet size may vary by application

²Will need modification to fit convertible

CORVETTE (C4)

'92-'96 5.7L V8, LT-1/LT-4 (dual converter)	16837
'92-'96 5.7L V8, LT-1 (muffler replacement), Dual Rear Exit	15623
'92-'95 5.7L V8, LT-1 (single/dual configuration with Y-pipe)	15838
'86-'91 5.7L V8, L-98, Dual Rear Exit	15658

CORVETTE (C5)

CAT-BACK	
'97-'04 5.7L V8, LS-1/LS-6 includes Tru-X, Quad Tip Exit	15660
AXLE-BACK	
'97-'04 5.7L V8, LS-1/LS-6, Quad Tip Exit, Magnaflow	15713

CORVETTE (C6)

CAT-BACK	
2009 6.2L Supercharged V8 ZR1, includes Tru-X, Dual Tip Exit	16670
'05-'09 6.0L/6.2L V8, LS-2/LS-3 includes Tru-X, Quad Tip Exit	15884
AXLE-BACK	
'05-'08 6.0L/6.2L V8, LS-2/LS-3 Quad Tip Exit	15886

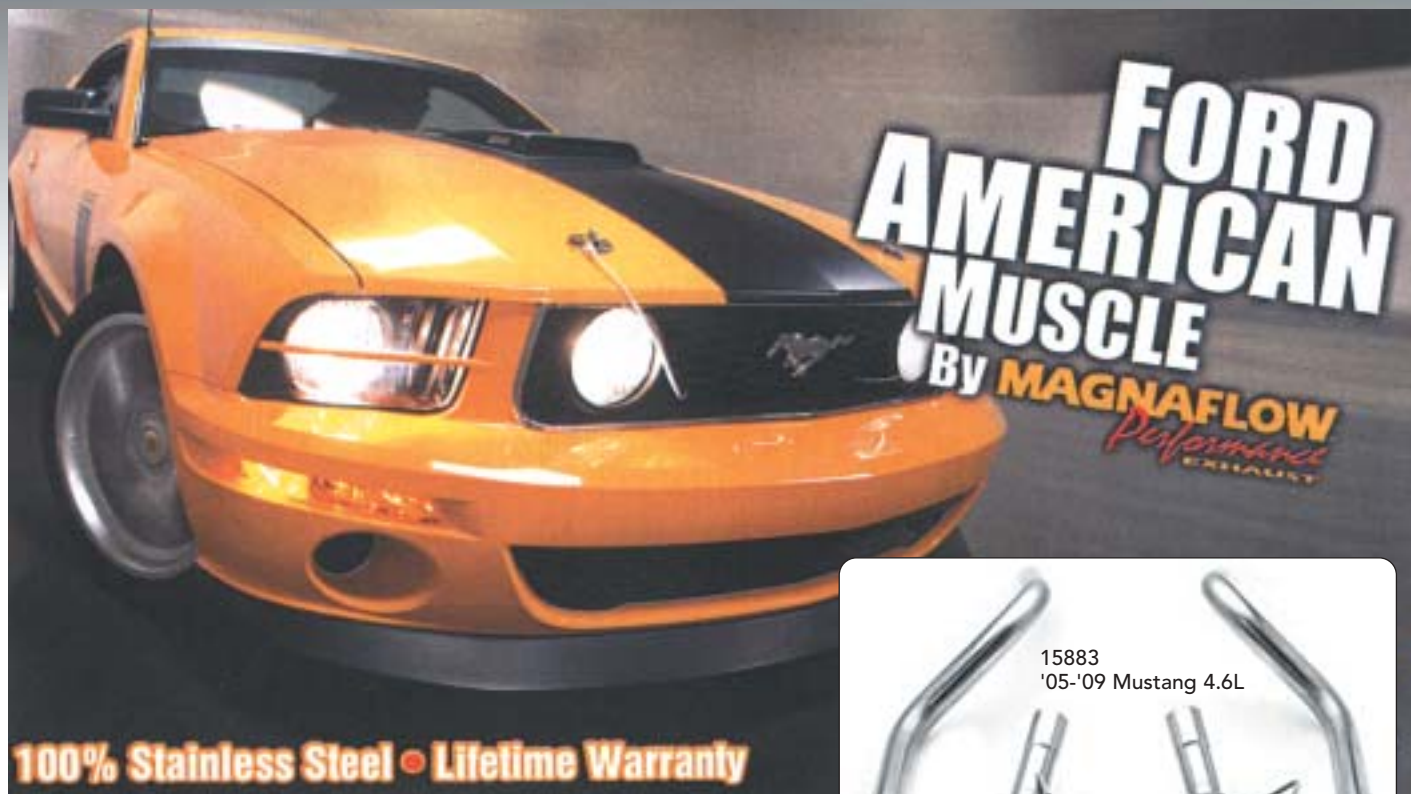
Some parts are not legal for sale or use in California on any pollution controlled motor vehicle.

MAGNAFLOW

Performance
EXHAUST

Ford American Muscle Exhaust

MagnaFlow performance exhaust systems are as rugged and reliable as the vehicle you drive. These exhaust kits feature OEM-style barbed hangers for easy installation, mandrel bends to prevent exhaust flow restrictions, and MagnaFlow's legendary straight-through, wide-open, stainless steel mufflers to provide a smooth, deep tone outside of the vehicle. They're also backed by MagnaFlow's lifetime warranty, so you will be able to enjoy a rich, powerful sound--from now on!



Make/Model	Part No.
MUSTANG 05-09 4.6L V8 GT/SHELBY GT/BULLIT	
CAT-BACK	
'05-'09 MagnaFlow Dual Exhaust system, 2.5"	15881
'05-'09 Magnapack Dual Exhaust system, 2.5" (Aggressive tone)	15883
'05-'09 Magnapack Dual Exhaust system, 3" (Aggressive tone)	16674
AXLE-BACK	
'05-'09 MagnaFlow Dual Exhaust muffler replacement, 2.5"	15882
'05-'09 Magnapack Dual Exhaust system, 2.5" (Aggressive tone)	16793
'05-'09 4.6L, V8, Muffler-Delete 2.5" (Aggressive tone)	16843
MUSTANG 05-09 4.0L V6	
CAT-BACK	
'05-'09 MagnaFlow Dual Exhaust system, (Dual Split Rear V8 look)	16605
AXLE-BACK	
'05-'09 Muffler replacement, single exit	15889
MUSTANG 99-04 4.6L V8 COBRA with IRS	
'99-'04 Cobra w/IRS, MagnaFlow Dual Exhaust system, 2.5"	15644
MUSTANG 99-04 4.6L V8 GT/MACH I/BULLIT	
'99-'04 GT/Mach 1, MagnaFlow Dual Exhaust system, 2.5"	15671
'99-'04 GT/Mach 1, Magnapack Dual Exhaust system, 2.5"	15673
MUSTANG 99-04 3.8L V6/BULLIT	
'99-'04 MagnaFlow Dual Exhaust system, (Dual Split Rear V8 look)	15717
MUSTANG 96-98 4.6L V8 GT/COBRA	
'96-'98 MagnaFlow Dual Exhaust system, 2.5"	15638
'96-'98 Magnapack Dual Exhaust system, 2.5"	15677
MUSTANG 94-95 5.0L V8 GT/COBRA	
'94-'95 MagnaFlow Dual Exhaust system, 2.5"	15638
'94-'95 Magnapack Dual Exhaust system, 2.5"	15677
MUSTANG 87-93 5.0L V8 LX/COBRA (ALSO 1986 5.0L GT)	
'87-'93 LX Only, MagnaFlow Dual Exhaust system, 2.5"	15630
1986 GT Only, MagnaFlow Dual Exhaust system, 2.5"	15630
MUSTANG 87-93 5.0L V8 GT	
'87-'93 MagnaFlow Dual Exhaust system, 2.5"	15632



**High-quality, high performance,
and no restrictions!**

MUSTANG 67-70 V8		
	Manifold Pipes	Exhaust
'67-'70 V8, 2.5" Dual Exhaust with Tru-X, exit options 289/302/351 ci	16446 ¹	15816 ²
'67-'70 V8, 3" Dual Exhaust with Tru-X, 289/302/351 ci	16446 ¹	15819 ²
MUSTANG 64.5-66 V8		
'64.5-'66 V8, 2.5" Dual Exhaust with Tru-X, exit options 289 ci	16445 ¹	15815 ²
'64.5-'66 V8, 3" Dual Exhaust with Tru-X, 289 ci	16445 ¹	15817 ²

¹Manifold Pipe Connections are 2.5" and inlet size may vary by application

²Will need modification to fit convertible

MAGNAFLOW

Performance
EXHAUST

Mopar American Muscle Exhaust

MagnaFlow performance exhaust systems are as rugged and reliable as the vehicle you drive. These exhaust kits feature OEM-style barbed hangers for easy installation, mandrel bends to prevent exhaust flow restrictions, and MagnaFlow's legendary straight-through, wide-open, stainless steel mufflers to provide a smooth, deep tone outside of the vehicle. They're also backed by MagnaFlow's lifetime warranty, so you will be able to enjoy a rich, powerful sound--from now on!

MOPAR AMERICAN MUSCLE
By **MAGNAFLOW** *Performance* EXHAUST

100% Stainless Steel • Lifetime Warranty

16623
05-'09 Chrysler 300 2.7L/3.5L

***High-quality, high performance,
and no restrictions!***

CHRYSLER

Make/Model	Part No.
300	
'05-'09 2.7L/3.5L V6, Single Exhaust, Dual Tip Exit	16629
'05-'09 2.7L/3.5L V6, V8 look, Dual Split Rear Exit, Quad Tip	16623
300C HEMI	
'05-'09 5.7L V8 Hemi with Tru-X, inc. AWD, Dual Rear Exit	15629
300C SRT-8 HEMI	
'05-'09 6.1L V8 Hemi Dual Rear Exit	16642

DODGE

Make/Model	Part No.
CHALLENGER SE	
2009 3.5L V6	16737
CHALLENGER R/T HEMI	
Cat-Back	
2009 5.7L V8 Hemi, Dual Rear Exit, Quad Tips	16756
2009 5.7L V8 Hemi, Dual Rear Exit, (reuses OEM tips)	16890
2009 5.7L V8 Hemi, Magnapack, Dual Rear Exit, Quad Tips	16891
2009 5.7L V8 Hemi, Magnapack, Dual Rear Exit, (reuses OEM tips)	16892
Axle-Back	
2009 5.7L V8 Hemi, Dual Rear Exit, Quad Tips	16893
2009 5.7L V8 Hemi, Dual Rear Exit, (reuses OEM tips)	16894
CHALLENGER SRT-8 HEMI	
2009 6.1L V8 Hemi, Dual Rear Exit	16755
2009 6.1L V8 Hemi, Dual Rear Exit, (reuses OEM tips)	16880

Make/Model	Part No.
CHALLENGER (E-BODY) - CROSSMEMBER-BACK	
'70-'72 V8, 2.5" Dual Exhaust with Tru-X, exit options	15851
'70-'72 V8, 3" Dual Exhaust with Tru-X	15852
CHARGER SE/SXT	
'06-'09 2.7L/3.5L V6	16635
Dual Rear Exit	16936
CHARGER R/T HEMI	
'06-'09 5.7L V8 Hemi with Tru-X, inc. AWD, Dual Rear Exit	15628
CHARGER SRT-8 HEMI	
'06-'09 6.1L V8 Hemi, Dual Rear Exit	16642
MAGNUM SE/SXT	
'05-'08 2.7L/3.5L V6	16635
MAGNUM R/T HEMI	
'05-'08 5.7L V8 Hemi with Tru-X, inc. AWD, Dual Rear Exit	15628
MAGNUM SRT-8 HEMI	
'05-'08 6.1L V8 Hemi with Tru-X, Dual Rear Exit	16642

Some parts are not legal for sale or use in California on any pollution controlled motor vehicle.



FLOWMASTER Exhaust

Complete Flowmaster systems outperform most OEM and competitive aftermarket exhaust systems. Why? Because all Flowmaster systems are designed and tested for each specific type of vehicle. Our systems always include design specific muffler applications and mandrel bent tubing which work together, creating a general improvement in power, exhaust tone and gas mileage.

TRUE DUAL MUSCLE CAR PERFORMANCE SYSTEMS

3" Muscle car system using Delta Force technology with 3" aluminized 16 gauge mandrel bent tubing, adjustable "H" pipes and includes the Performance Mufflers. Comes with bolt-on hangers.



APPLICATION	MUFFLER	PART NO.
67-68 Camaro V8 2 1/2" AT	40 Series	17129
67-74 Camaro V8, 2 1/2" Transverse muffler AT	80 Series	17104
70-73 Camaro V8 2 1/2" AT	50 Series	17149
64-72 Chevelle/El Camino V8 2 1/2" AT SS tips	30 Series	17119
55-57 Belair 150, 210 V8 V8 AT SS tips	Super 40	17174
68-72 GM A-Body, V-8, 3.00" Exhaust Kit	30 Series	17200
64-67 GM A-Body, V-8, 3.00" Exhaust Kit	30 Series	17202
70-74 Chrysler Corp. E-Body, V-8	40 Series	17379
68-70 Chrysler B-Body 2 1/2" AT	Super 40	17390
71-74 Chrysler B-Body 2 1/2" AT	Super 40	17391
68-70 Chrysler Corp. B-Body, V-8	Super 40	17382
71-74 Chrysler Corp. B-Body, V-8, 3.00" Dual Exhaust System	Super 40	17383
67-72 Cutlass/4-4-2 V8 2 1/2" AT	30 Series	17119
67-68 Firebird V8 Exc Convertible 2 1/2" AT	40 Series	17129
67-74 Firebird V8 Exc Convertible 2 1/2" Transverse muffler AT	80 Series	17104
70-73 Firebird V8 2 1/2" AT50 Series	50 Series	17149
64-66 Mustang V8 (not GT) 2 1/2" AT SS tips	40 Series	17273
67-70 Mustang w/Rear Valance Cutout	Super 44	17281

U-FIT DUAL KIT

The new U-Fit dual pipe kits come complete with all the pipes you need to build a custom dual exhaust system in 2.25, 2.50 and 3.00-inch pipe diameters. These U-Fit kits include the front adapter pipes, intermediate pipes, H-pipe assembly, over-the-axle pipes, and your choice of optional tailpipe exits. Each piece has a slip-fit connection, for easy assembly. These kits do not come with any hardware.



APPLICATION	PART NO.
2.25" 16-piece Universal pipe kit	15935
2.50" 16-piece Universal pipe kit	15936
3.00" 16-piece Universal pipe kit	15937

UNIVERSAL SCAVENGER PIPE KIT

Our Universal Scavenger Pipe Kits can produce significant torque improvement. It's patented D-port™ technology functions exceptionally well on modified GM, Ford, and Mopar "Muscle Car" applications while maintaining the classic Flowmaster sound.



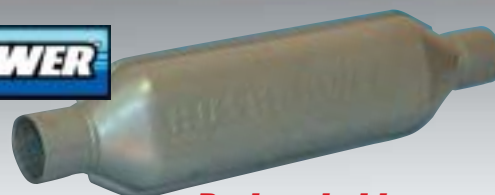
APPLICATION	PART NO.
3.00" Universal Cut to Fit	15933
'86-'93 Mustang 5.0L LX/GT 2.50"	1045



NEW!

HUSHPOWER II™ MUFFLERS

Hushpower's new HP-2 series of high performance mufflers has it all - compact enough to fit the tight demands of street rods, lowriders, & off-road applications, with a distinctive look and a sound like no other.



Designed with Cool Shell Technology!

DESCRIPTION	PART NO.
2.00" In/Out	12018400
2.25" In/Out	12418400
2.50" In/Out	12518400

10 SERIES DELTA FORCE® RACE MUFFLER

The 10 series race mufflers all utilize Flowmaster's patented "Delta Flow" technology and have a noticeable dB reduction over open headers. For racing applications where a race muffler is required, but without a set decibel limit to be met.



DESCRIPTION	PART NO.
4" x 9.75" x 6.75" - 12" Overall Length	
2.50" Center Inlet/ Center Outlet	325108
3.00" Center Inlet/ Center Outlet	9430109

OUTLAW SERIES MUFFLERS

Designed to be connected directly to the header collectors, or can be added into an existing exhaust system. OUTLAW mufflers are recommended for racing applications where a race muffler is required, but without a set decibel limit to be met.



DESCRIPTION	PART NO.
3.00" In/Out	15430
3.50" In/Out	15435
3.00" In/Out "Shorty"	15430S
3.50" In/Out "Shorty"	15435S

"Shorty" Outlaw



HEADER COLLECTOR BALL FLANGE

Get rid of those 3-bolt flanges.

These Flowmaster ball flange kits are designed to replace those old 3-bolt flanges. They have a unique ball flange style that requires no gasket, giving you a leak-free connection.

DESCRIPTION	PART NO.
2.50" Collector	15925
3.00" Collector	15930



FLOWMASTER Exhaust

Complete Flowmaster systems outperform most OEM and competitive aftermarket exhaust systems. Why? Because all Flowmaster systems are designed and tested for each specific type of vehicle. Our systems always include design specific muffler applications and mandrel bent tubing which work together, creating a general improvement in power, exhaust tone and gas mileage.



New!
Hear the Ponies!



2005-'08 MUSTANG AMERICAN THUNDER® AXLE-BACK KIT

Flowmaster's new axle-back system for the latest generation of 05-08 Mustang's delivers improved performance, looks and a sound reminiscent of those early 5.0L cars. Featuring Classic square cased 40 Series® mufflers, the kit follows the factory exhaust routing, utilizes the factory hanger mounting points and includes all necessary mounting hardware for an easy and perfect fitment. Designed for the serious enthusiast who really wants to hear their pony breathe, these mufflers produce a deep and aggressive exterior tone on the throttle, along with a considerable amount of interior sound.

Part No. 817460



CORVETTE MUFFLERS			
	Powerful	Deep	Aggressive
Flowmaster	High	High	High
Other	Low	Low	Low

CORVETTE EXHAUST

APPLICATION

Exhaust Systems

	PART NO.
1997-04 C5/Z06 Round Tip Left/Right Side	525802-L/525802-R
1997-04 C5/Z06 Oval Tip Left/Right Side	525801-L/525801-R
1990-95 ZR-1, 5.7L Force II System	17115
1986-90 C4 5.7L Force II System	17153
1992-96 LT-1 / LT-4, 5.7L Force II System	17217
2005-08 C6 American Thunder	17416
2005-08 C6 American Thunder w/Quad Tips	17427



LOGO EMBOSSED POLISHED STAINLESS TIPS

DESCRIPTION

	PART NO.
Rolled Edge Angle Cut	
3.00" Tip dia. x 2.00" pipe dia. x 6.00" L, Weld-on Style	15360
4.00" Tip dia. x 3.50" pipe dia. x 10.00" L, Weld-on Style	15366
3.00" Tip dia. x 2.50" pipe dia. x 12.00" L, Clamp-on Style	15361
3.50" Tip dia. x 2.25" pipe dia. x 7.50" L, Clamp-on Style	15364
3.50" Tip dia. x 3.00" pipe dia. x 12.00" L, Clamp-on Style	15363
4.00" Tip dia. x 2.50" pipe dia. x 7.50" L, Clamp-on Style	15365
Straight Edge Angle Cut	
3.00" Tip dia. x 2.50" pipe dia. x 13.00" L, Weld-on Style	15362



FLOWMASTER MODERN MUSCLE EXHAUST SYSTEMS

Flowmaster Performance exhaust is more than pieces of pipe and mufflers, its exhaust technology that only comes from proper research, engineering and product design. Flowmaster exhaust system provide dyno proven power gains. Two system options are available from Flowmaster. American Thunder systems give the full aggressive "Flowmaster tone" and performance benefits. Force II systems provide the Flowmaster sound under acceleration and will produce lower sound levels while cruising.

AT = American Thunder F2 = Force II

APPLICATION

PART NO.

Chevrolet

86-91 Camaro 3" Single in/Double out SS tips AT	17233
89-92 Camaro 2 1/2"/3" Single in/Double out SS tips AT	17228
93-95 Camaro 3" Single in/Double out AT	17143
95-97 Camaro 3" Single in/Double out AT	17133
98-02 Camaro V8 LS1 3" Single in/Double 3" out	17199
94-96 Impala SS V8 5.7L 2.25" SS tips F2	17218

Ford

86 Mustang GT 5.0L 2 1/2" AT	17113
86 Mustang GT 5.0L 2 1/2" SS tips AT	17213
87-93 Mustang GT 5.0L 2 1/2" AT	17116
87-93 Mustang GT 5.0L 2 1/2" F2	17106
94-97 Mustang GT/Cobra 4.6/5.0L 2 1/2" AT	17112
94-97 Mustang GT/Cobra 4.6/5.0L 2 1/2" F2	17114
94-97 Mustang GT/Cobra 4.6/5.0L 2 1/2" SS tips AT	17212
99-04 Mustang LX V6 2 1/2" SS Tips F2	17275
99-04 Mustang GT 4.6L 2 1/2"/3" SS tips AT	17312
99-04 Mustang GT 4.6L 2 1/2"/3" SS tips F2 (not Cobra)	17267
99-02 Mustang Cobra V8, 3" Dual Exhaust System	17373
05-08 Mustang GT 4.6L Muffler Kit AT	17410

Pontiac

05-06 GTO F2	17452
86-91 Firebird V8 Single 3" in/Double out SS tips AT	17233
93-95 Firebird V8 Single 3" in/Double 2 1/2" out AT	17143
95-97 Firebird V8 Single 3" in/Double 2 1/2" out AT	17133
98-02 Firebird V8 Single 3" in/Double 3" out SS tips AT	17199

EXHAUST SYSTEM for '05-'08 CHARGER RT

A "cat-back" kit designed to fit 5.7L Hemi V8 engines. Comes complete with dual 2.50" mandrel-bent tubing, a Scavenger™ crossover assembly, Super 40™ Series mufflers & 2 tailpipe resonators. A set of premium 4" Flowmaster embossed, stainless exhaust tips exit at the stock location.

APPLICATION

PART NO.

'05-'08 Dodge Charger RT 5.7L Hemi	
(Will also fit 04-08 Charger/Magnum RT & Chrysler 300C 5.7L Hemi)	17405





FLOWTECH Mufflers

Flowtech mufflers include the award-winning and patent-pending Warlock Racing Mufflers and the great sounding Afterburner Sound Engineered Mufflers. Get ripped with the Flowtech Raptor mufflers, or kill back pressure with a pair of Purple Hornies. Flowtech headers, mufflers, cutouts, exhaust systems and accessories are the absolute best value you can buy.

TERMINATOR
THE "BAD BOYS" OF HEADERS™



50153FLT Mustang Muffler Set w/Tips



50151FLT

TERMINATOR™ MUFFLERS

The Terminator is constructed entirely of super thick, fully-welded aluminized steel, with huge 3" inner pass tubes that reduce backpressure and increase horsepower like no other muffler can. Put a couple of Terminators behind your powerplant and you'll hear a bark that will scare the meanest junk yard dog in town.

- Reduced Backpressure
- Increased Horsepower
- No Glass To Burn Or Blow Out
- Fully Welded For Strength/Durability

INLET	OUTLET	PART NO.	APPLICATION
2-1/4"	2-1/4"	50121FLT	Universal Muffler
2-1/2"	2-1/2"	50122FLT	Universal Muffler
3"	3"	50130FLT	Universal Muffler
2-1/4"	2-1/4"	50151FLT	Mustang 5.0L GT/LX
2-1/2"	2-1/2"	50152FLT	Mustang 5.0L GT/LX
2-1/2"	3"	50153FLT	05 Mustang Muffler Set w/Tips

RAPTOR



RAPTOR TURBO PERFORMANCE MUFFLERS

If you want a mean muffler that won't tear the guts from your wallet, get a Raptor. Turbo performance muffler features a unique sound rib case & aluminized, lock seal construction. Offers gigantic, high-output flow tubes to provide more horsepower, better mileage & a sound of pure performance. Case length: 13", case width: 10", case height: 4-1/2".

INLET	OUTLET	PART NO.	DESCRIPTION
2"	2"	50050FLT	Universal Performance Muffler
2-1/4"	2-1/4"	50051FLT	Universal Performance Muffler
2-1/2"	2-1/2"	50052FLT	Universal Performance Muffler
3"	3"	50054FLT	Universal Performance Muffler

MUFFLER DIMENSIONS: 13" LONG x 10" WIDE x 4-1/2" HIGH

REDHOTS



RED HOTS MUFFLER

The classic design includes thick, long lasting high temperature Cerama-Glass packing wrapped around a power louver baffle. Backpressure is decreased to increase exhaust flow and increase horsepower. Increases horsepower and torque. Large 3-1/2" diameter heavy gauge case. Delivers a rich, powerful, red hot sound.

INLET	OUTLET	CASE	OVERALL	PART NO.
2"	2"	18"	24"	50250FLT
2-1/4"	2-1/4"	18"	24"	50251FLT
2-1/2"	2-1/2"	18"	24"	50252FLT

50225FLT



50230FLT



50232FLT

PURPLE HORNIES

PURPLE HORNIES

Kill the back pressure and release the rich powerful sound of your exhaust with Purple Hornies! Each comes in the classic glasspack design and a vivid purple paint scheme. Available in slip-fit or header mount configurations.

DESCRIPTION	PART NO.
Slip Fit 24" long x 2-1/4" x 2-1/4"	50225FLT
3" Header Fit 24" long x 3" x 2-1/4"	50230FLT
32" Turndown Header 3" x 3"	50231FLT
32" Jeep Turndown Header 3" x 3"	50232FLT

FLOWMASTER Exhaust

Complete Flowmaster systems outperform most OEM and competitive aftermarket exhaust systems. Why? Because all Flowmaster systems are designed and tested for each specific type of vehicle. Our systems always include design specific muffler applications and mandrel bent tubing which work together, creating a general improvement in power, exhaust tone and gas mileage.



FLOWMASTER® Mufflers named "Top Ten Most Significant Speed Parts of All Time!" by Hot Rod Magazine



**Flowmaster's
Most Powerful
Street Muffler!**

Deep POWERFUL Tone!

SUPER 40

The Super 40 features a 5" x 10" case design to create a deeper tone that retains the Classic Flowmaster 40 series sound. Increased Flow Path Radius for optimum internal flow using the latest in Delta Flow internal design. The Super 40 is the most aggressive, deepest sounding two-chamber muffler ever built. Dyno-performance is so impressive that we now include the Super 40's in some of our 3" muscle car systems.

DESCRIPTION	PART NO.	DESCRIPTION	PART NO.
2 1/4" Center in/2 1/4" Center out	952445	2 1/2" Offset in/2 1/2" Same Offset out	952549
2 1/4" Offset in/2 1/4" Center out	952446	3" Center in/3" Center out	953045
2 1/4" Center in/2 1/4" Offset out	952447	3" Offset in/3" Center out	953046
2 1/4" Offset in/2 1/4" Opposite Offset out	952448	3" Center in/3" Offset out	953047
2 1/4" Offset in/2 1/4" Same Offset out	952449	3" Offset in/3" Opposite Offset out	953048
2 1/2" Center in/2 1/2" Center out	952545	3" Offset in/3" Same Offset out	953049
2 1/2" Offset in/2 1/2" Center out	952546	3" Center in/2 1/2" Dual out	9530452
2 1/2" Center in/2 1/2" Offset out	952547	3" Offset in/2 1/2" Dual out	9530462
2 1/2" Offset in/2 1/2" Opposite Offset out	952548		

Horsepower, Torque & Tone!



SUPER 44™

Flowmaster's Super 44 muffler has been engineered to deliver performance advantages not found in the original 40 Series muffler. Utilizing Flowmaster's Delta Flow technology, the Super 44 muffler delivers a rich deep tone with an improved flow path radius, optimum internal flow and sound control engineering. The Super 44's smaller 4" all black case fits a wider range of vehicles and are designed for street cars, race cars, and sport trucks when builders need Flowmaster's dynamic sound, torque, and horsepower improvements.

DESCRIPTION	PART NO.	DESCRIPTION	PART NO.
2.50" Center in/center out	942545	3.00" Offset in/center out	943046
2.50" Offset in/center out	942546	3.00" Center in/offset out	943047
2.50" Center in/offset out	942547	3.00" Offset in/offset out	943048
2.50" Offset in/offset out	942548	3.00" Offset in/offset out	943049
2.50" offset in/offset out	942549	3.00" Center in/2.5" dual out	9430452
3.00" Center in/center out	943045	3.00" Offset in/2.5" dual out	9430462

Join The Team - It's A Sound Decision! Flowmaster's State-Of-The-Art Research & Development facility provides the aftermarket with the most technologically advanced exhaust products available. Manufactured entirely in America from 16 gauge aluminized steel, inside and out, thereby greatly increasing protection against rust and corrosion. Flowmaster offers reduced back pressure for increased horsepower, torque and fuel economy, with a deep performance tone. "Nothing else sounds like a Flowmaster!"



Deeper Exhaust Sound - Powerful Exterior Tone Level

Delta Flow® technology provides superior scavenging of exhaust gases even over a comparable (standard) Flowmaster muffler. This results in increased horsepower, torque and fuel economy, along with reductions in exterior sound levels and interior resonance.

40 SERIES DELTA FLOW

Performance Strip/Street Mufflers 40 Series/2 Chamber

Mufflers are 19" overall length, 4" thick and 9.75" wide with an aggressive performance tone. Turbo style.

DESCRIPTION	PART NO.	DESCRIPTION	PART NO.
2.25" Center in/center out	942450	2.50" Offset in/center out	942551
2.25" Offset in/center out	942451	2.50" Center in/offset out	942552
2.25" Center in/offset out	942452	2.50" Offset in/offset out;	
2.25" Offset in/offset out;		Mustang	942553
Mustang	942453	3.00" Center in/center out	943050
2.50" Center in/center out	942550	3.00" Offset in/center out	943051

Good Performance With Tone Control - Deep Exterior Tone Level

50 SERIES DELTA FLOW Performance Street Mufflers

2.25"-2.50" mufflers are 22" overall length, 3.00" mufflers are 23" overall length. All are 9.75" wide by 4" thick with a performance tone. Turbo style.



DESCRIPTION	PART NO.	DESCRIPTION	PART NO.
2.00" Center in/center out	942040	2.50" Center in/center out	942540
2.00" Offset in/center out	942041	2.50" Offset in/center out	942541
2.00" Offset in/offset out	942043	2.50" Center in/offset out	942542
2.00" Center in/center out	942050	2.50" Offset in/offset out	942543
2.25" Center in/center out	942440	3.00" Center in/center out	943040
2.25" Offset in/center out	942441	3.00" Offset in/center out	943041
2.25" Center in/offset out	942442	3.00" Center in/offset out	943042
2.25" Offset in/offset out	942443	3.00" Offset in/offset out	943043

Some parts are not legal for sale or use in California on any pollution controlled motor vehicle.

MAGNAFLOW

Performance
EXHAUST

Universal Catalytic Converters

We are the world leader in the manufacturing of automotive catalytic converters and MagnaFlow Performance Exhaust products. Our production and design techniques contribute to Car Sound's standing as the highest quality and best valued products on the market.

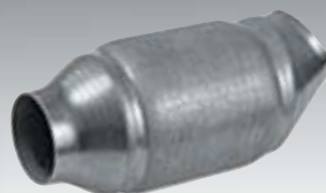
METALLIC-CAT CONVERTERS

Fits all Vehicles up to 378 CID/6.2L, 6000 lbs.



**Center-Center
Spun Metallic**

IN/OUT	PART NO.
1.75"	59953
2.00"	59954
2.25"	59955
2.50"	59956
2.75"	59958
3.00"	59959



Offset/Angled Spun Metallic

IN/OUT	PART NO.
2.25"	59975
2.50"	59976



Offset/Offset Spun Metallic

IN/OUT	PART NO.
2.00"	59904
2.25"	59905
2.50"	59906

CERAMIC CONVERTERS

Fits all Vehicles up to 378 CID/6.2L, 6000 lbs.



Standard Oval

IN/OUT	PART NO.
2.00"	94004
2.25"	94005
2.50"	94006
3.00"	94009



Standard Oval w/Air Tube

IN/OUT	PART NO.
2.00"	94014
2.25"	94015
2.50"	94016
3.00"	94019



Standard Oval w/O2 Sensor Boss

IN/OUT	PART NO.
1.75"	94033
2.00"	94034
2.25"	94035
2.50"	94036
3.00"	94039

CERAMIC CONVERTERS

Fits all Vehicles up to 256 CID/4.2L, 4250 lbs.



Round

IN/OUT	PART NO.
1.75"	53003
2.00"	53004
2.25"	53005
2.50"	53006
3.00"	53009



Round w/O2 Sensor Boss

IN/OUT	PART NO.
1.75"	53033
2.00"	53034
2.25"	53035



Round w/Mid-bed O2 Sensor Boss

IN/OUT	PART NO.
1.75"	54053
2.00"	54054
2.25"	54055

GM PROBLEM SOLVER

For GM 3.1/3.4/3.8L Engines



Round

IN/OUT	w/O2	w/o O2
2.00"	94834	94804
2.25"	94835	94805
2.50"	94836	94806

DIRECT-FIT CATALYTIC CONVERTORS

MagnaFlow Direct-Fit Catalytic Converters by Car Sound are designed for easy bolt-on installation for the Professional Installer. Welding, cutting and tube bending equipment is not required. Each is designed to exact original equipment specifications. The Direct-Fits are available for the most popular vehicle makes and models.



MAGNAFLOW Mufflers

No chambers, no baffles, no louvers, and no restrictions. MagnaFlow mufflers feature a straight-through exhaust flow pattern that means there are no restrictions to exhaust flow. No restriction means better flow and more horsepower. Don't let the straight thru design fool you, this muffler sounds great with a smooth deep tone.

MAGNAFLOW
Performance
EXHAUST

6" ROUND RACE SERIES

Center/Center
Body Length: 6"
Overall Length: 12"

IN/OUT	Stainless Steel Part No.
2.50"	14158
3.00"	14159
3.50"	14160
4.00"	14162



Center/Center
Body Length: 14"
Overall Length: 20"

IN/OUT	Stainless Steel Part No.
3.50"	14161
4.00"	14163

5" X 8" OVAL RACE SERIES

Center/Center
Body Length: 6"
Overall Length: 20"

IN/OUT	Stainless Steel Part No.
2.50"	14148
3.00"	14149
3.50"	14150
4.00"	14152



Center/Center
Body Length: 14"
Overall Length: 20"

IN/OUT	Stainless Steel Part No.
3.50"	14151
4.00"	14153

4" X 9" OVAL BODY MUFFLERS



Center/Center
Body Length: 14"
Overall Length: 20"

IN/OUT	Stain. Steel	Polished SS
2.00"	11214	----
2.25"	11215	14315
2.50"	11216	14316
3.00"	11219	14319



Offset/Center
Body Length: 14"
Overall Length: 20"

IN/OUT	Stain. Steel	Polished SS
2.00"	11224	14324
2.25"	11225	14325
2.50"	11226	14326
3.00"	11229	14329



Offset/Offset
Body Length: 14"
Overall Length: 20"

IN/OUT	Stain. Steel	Polished SS
2.00"	11234	----
2.25"	11235	14335
2.50"	11236	14336

5" X 11" OVAL BODY MUFFLERS



Offset/Center
Body Length: 22"
Overall Length: 28"

IN/OUT	Stain. Steel	Polished SS
2.50"	12586	14586
3.00"	12589	14589
3.50"	12909	14909



Offset/Offset
Body Length: 22"
Overall Length: 28"

IN/OUT	Stain. Steel	Polished SS
2.50"	12577	14577
3.00"	12578	14578



Center/Dual Out
Body Length: 22"
Overall Length: 28"

IN/OUT	Stain. Steel	Polished SS
2.5"/2.25"	12580	14580
3.0"/2.5"	12588	14588
3.0"/3.0"	12590	14590
3.5"/2.5"	12587	14587
4.0"/3.0"	12594	14594

5" X 8" OVAL BODY MUFFLERS



Center/Center
Body Length: 18"
Overall Length: 24"

IN/OUT	Stain. Steel	Polished SS
2.00"	12244	----
2.25"	12245	14245
2.50"	12246	14246
3.00"	12249	14249



Offset/Center
Body Length: 18"
Overall Length: 24"

IN/OUT	Stain. Steel	Polished SS
2.00"	12254	----
2.25"	12255	14255
2.50"	12256	14256
3.00"	12259	14259



Dual In/Dual Out
Body Length: 18"
Overall Length: 24"

IN/OUT	Stain. Steel	Polished SS
2.5"/2.5"	12468	14468
3.0"/3.0"	12469	----



Offset/Center
Body Length: 24"
Overall Length: 30"

IN/OUT	Stain. Steel	Polished SS
2.50"	12286	14250
3.00"	12289	14251



CAMARO/FIREBIRD
Offset/Dual Out
Body Length: 18"
Overall Length: 24"

IN/OUT	Stain. Steel	Polished SS
2.5"/2.25"	12266	14266
2.5"/2.5"	12265	----
3.0"/2.5"	12267	14267

TRUE BOLT-ON TIPS

All new, these universal tips feature the beefiest clamp in the business. The clamp is welded to the tip, uses high strength weather-proof hardware and has a full 4" range adjustment.



35210

DESCRIPTION	DIAMETER	TYPE	PART NO.
Fits 4" Tail Pipe	5"	Single Wall	35214
Fits 3.5" Tail Pipe	5"	Single Wall	35213
Fits 2.75" through 3" Tail Pipe	4"	Single Wall	35212
Fits 2.50" through 2.75" Tail Pipe	3.5"	Single Wall	35209
Fits 2.25" through 2.50" Tail Pipe	3"	Single Wall	35208
Fits 2.50" through 2.75" Tail Pipe	3.5"	Double Wall	35210
Fits 2.75" through 3" Tail Pipe	3.5"	Double Wall	35211

5" X 8" UNIVERSAL MUFFLERS with STAINLESS STEEL TIPS



DESCRIPTION	DIAMETER	Tip Length/Inlet	PART NO.
Double Wall Straight Cut	(2) 3" tips	6.5"/2.25"	14815
Double Wall Angle Cut	4" tip	7"/2.25"	14829
Single Wall Straight Cut	4" tip	1.75"/2.25"	14853
Single Wall Angle Cut	4" tip	3.5"/2.25"	14859

Some parts are not legal for sale or use in California on any pollution controlled motor vehicle.



Mustang Performance

Read the magazines, the editors agree that BBK knows how to get Ponys to perform. BBK recognizes that all the power under the hood is useless unless you can put it to the ground. This selection of Mustang suspension and clutch products is 100% streetable, but also turns horses loose to run wild and free.

MUSTANG CHASSIS BRACING COMPONENTS

Improves chassis rigidity for better handling and performance characteristics.



APPLICATION	PART NO.
1979-93 Mustang - Standard Style Subframe Connector	2506
1984-04 Mustang - Competition Series Subframe Connector	2520
1979-93 Mustang - w/Seat Bracket Support Subframe Connector	2542
1984-04 Mustang - Standard Style Subframe Connector	2543

TUBULAR STRUT TOWER BRACES

- Built from sturdy computer-welded steel for maximum strength
- Available for 1986-06 Mustang
- Optional chrome finish also available



APPLICATION	PART NO.
1986-93 Mustang V-8 Tubular Strut Tower Brace (Black)	2504
1986-93 Mustang V-8 Tubular Strut Tower Brace (Chrome)	25040
1994-95 Mustang V-8 Tubular Strut Tower Brace (Black)	2513
1994-95 Mustang V-8 Tubular Strut Tower Brace (Chrome)	25130
1996-04 Mustang V-8/V-6 Tubular Strut Tower Brace (Black)	2516
1996-04 Mustang V-8/V-6 Tubular Strut Tower Brace (Chrome)	25160
2005-06 Mustang GT Comp-Series Strut Tower Brace (Charcoal)	2517
2005-06 Mustang GT Tubular Strut Tower Brace (Black)	2518
2005-06 Mustang GT Tubular Strut Tower Brace (Chrome)	25180
COMPETITION SERIES	
2005-08 Mustang GT & V6 Tubular Strut Tower Brace (Black)	2618
2005-08 Mustang GT & V6 Tubular Strut Tower Brace (Chrome)	26180

ADJUSTABLE CLUTCH QUADRANT & CABLE

- Allows precise clutch adjustment
- Easy to install—simple to adjust
- Works great with stock and H.D. clutches
- Fits 1979-2004 Mustang models



APPLICATION	PART NO.
1979-95 Mustang/Capri 5-spd. Adjustable Cable & Quadrant Kit	1505
1979-95 Mustang Quadrant, Cable and Adjuster Kit	15055
1996-03 Mustang GT & Cobra Adjustable Cable & Quadrant Kit	1609
1979-95 Mustang GT & Cobra Heavy-Duty Adjustable Cable Only	3517
1996-04 Mustang GT & Cobra Heavy-Duty Adjustable Cable Only	3519
1996-04 Mustang GT & Cobra Adjustable Cable/Aluminum Quadrant/Firewall Adjuster Kit	16095

BILLET-ALUMINUM CLUTCH ADJUSTER

- Allows easy access clutch adjustment
- Fits 1979-current Mustang models
- Anodized CNC-machined aluminum

Part No. 15050



GRIPP HEAVY-DUTY CONTROL ARMS

- Super-strong robotic welded construction
- Improved handling & better launches
- Polyurethane bushings with greasable fittings



APPLICATION	PART NO.
1979-98 Mustang Rear Lower Control Arms	2521
1979-04 Mustang Rear Upper Control Arms	2522
1979-98 Mustang Rear Upper & Lower Control Arms	2525
1979-98 Mustang GT V-6 Rear Upper & Lower Control Arm Kit	2526
1999-04 Mustang Rear Lower Control Arms	25210
1999-04 Mustang Rear Upper & Lower Control Arms	25260
2005-08 Mustang Rear Upper & Lower Control Arms	2523

ADJUSTABLE CASTER/CAMBER PLATES

- Available for all 1979-2004 Mustang models
- A must with lowered vehicles
- Billet aluminum construction for maximum strength



APPLICATION	PART NO.
Aluminum Adjustable Caster/Camber Kit (1979-93 Mustang)	2525
Aluminum Adjustable Caster/Camber Kit (1994-2004 Mustang)	2527

Bolt-on 15-20 more HP!



PERFORMANCE X-PIPES AND H-PIPES

- Available with or without high flow catalytic converters
- Direct replacement for factory OEM pipes - works with all aftermarket headers
- OEM quality flange with factory O2 sensor locations and air pump fittings.

APPLICATION	OFF-ROAD	w/Converter
1986-93 Mustang 5.0L GT 2-1/2" H-Pipe	1507	1521
1986-93 Mustang 5.0L GT 2-1/2" X-Pipe	1661	1662
1994-95 Mustang 5.0L GT 2-1/2" H-Pipe	1562	1563
1994-95 Mustang 5.0L GT 2-1/2" X-Pipe	1664	1663
1996-98 Mustang 4.6L 2V GT 2-1/2" H-Pipe	1565	----
1996-98 Mustang 4.6L 4V Cobra 2-1/2" H-Pipe	1566	----
1996-98 Mustang 4.6L 2V GT 2-1/2" X-Pipe	1665	1666
1996-98 Mustang 4.6L 4V Cobra 2-1/2" X-Pipe	1616	1618
1999-04 Mustang 4.6L GT/Cobra 2-1/2" X-Pipe	1669	1670
2005-08 Mustang 4.6L GT 1-3/4" X-Pipe	1769	1770