



BBK Truck Performance

BBK's CNC series headers, with quality features as fully computerized mandrel-bent heavy-gauge tubing, precision die-stamped and laser-cut flanges, and our optional Polished Ceramic Finish, eliminate all the nightmares that used to be associated with header installs. Built to fit, built to last, built to seal, BBK headers create horsepower, not headaches!

Bolt-on 10-15 HP!

**POWER-PLUS®
COLD-AIR
INDUCTION
SYSTEMS**



- Bolt-on 10-15 Horsepower in Minutes!
- High flow washable cotton element filters
- Show chrome or powdercoat finishes available
- Direct-fit - no modifications required, simple hand tools
- No additional tuning required
- Factory computer will automatically compensate for A/F ratios

APPLICATION	PART NO.
Ford Applications	
1999-03 Lightning, Chrome finish	1734
1997-03 F150/Expedition, Chrome finish	1720
2004-08 F-Series 4.6L, Chrome finish	1743



**POWER-PLUS® PERFORMANCE
THROTTLE BODIES**

APPLICATION	PART NO.
Ford Applications	
1997-03 4.6L/5.4L F-Series/Expedition, 75mm	1703
1997-03 4.6L 4-V/V-10 F-Series, Twin 62mm	1705
1997-03 V-10 F-Series/Expedition, Twin 65mm	1711
1999-03 Lightning, Twin 65mm	1755
1987-96 302/351 F-Series, Twin 56mm	3501
1987-96 302/351 F-Series, Twin 61mm	3503
2004-up 4.6L F-Series/Expedition, 75mm	1758
2004-up 5.4L F-Series/Expedition, 80mm	1759
GM Applications	
1998-02 F-Body/GM Truck/2004 GTO, 80mm (w/Adapter Kit)	1709
1996-98 305/350 GM Vortec Truck, 80mm (w/Adapter Kit)	1710
1999-02 4.8L, 5.3L, 6.0L Truck w/Electronic Throttle Control, 80mm	1756
2003-04 4.8L, 5.3L, 6.0L Truck, 80mm	1757
80mm - 8100 GM Truck Throttle Body	1766

GM FULL-SIZE TRUCK HEADERS

BBK's popular 1-3/4" CNC-Series Performance Headers are now available to owners of the 99-04 GM 4.8, 5.3 and 6.0 liter truck models. All units come standard with a beautiful polished ceramic finish as well as all gaskets and hardware. Installation can be done in approximately 4-6 hours with hand tools and a gain of 10-13 rear wheel horsepower is common.



APPLICATION	PART NO.
FULL-SIZE TRUCK	
1999-04 4.8/5.3 1-3/4" CNC-Series Performance Headers (Chrome)	4005
1999-04 4.8/5.3 1-3/4" CNC-Series Performance Headers (Ceramic)	40050
1999-04 6.0L 1-3/4" CNC-Series Performance Headers (Chrome)	4006
1999-04 6.0L 1-3/4" CNC-Series Performance Headers (Ceramic)	40060

DODGE HEMI RAM PERFORMANCE HEADERS

Bolt-on 15hp and 24ft/lbs at the wheels with these dyno-proven performance headers for Hemi Ram owners. With their unique tuned-length design, these headers are a direct bolt-on and feature OEM quality features such as mandrel-bent tubing 3/8" laser-cut flanges and a standard chrome finish.



APPLICATION	PART NO.
1-3/4" Headers - Chrome (2004-06 Hemi Ram 5.7L)	4009
1-3/4" Headers - Polished Ceramic (2004-06 Hemi Ram 5.7L)	40090

F-SERIES/ EXPEDITION PERFORMANCE HEADERS

Late-model truck owners have counted on the quality and performance of BBK Headers for over a decade. Now owners of the 4.6 and 5.4 liter F-Series and Expedition can benefit from such features as 1-5/8" mandrel-bent tubing and 3/8" thick laser-cut flanges. Chrome finish is standard with polished ceramic also available.



APPLICATION	PART NO.
1987-96 302 F-Series Headers (Chrome)	3510
1987-96 302 F-Series Headers (Ceramic)	35100
1987-96 351 F-Series Headers (Chrome)	3511
1987-96 351 F-Series Headers (Ceramic)	35110
1997-03 4.6L Truck Headers (Chrome)	3515
1997-03 4.6L Truck Headers (Ceramic)	35150
1997-03 5.4L Truck Headers (Chrome)	3516
1997-03 5.4L Truck Headers (Ceramic)	35160
1999-03 5.4L F150/Expedition 1-5/8" Truck Headers (Chrome)	3518
1999-03 5.4L F150/Expedition 1-5/8" Truck Headers (Ceramic)	35180

EDELBROCK Exhaust Systems

State-of-the-Art Testing Proves Performance Gains

Edelbrock engineers use a sophisticated SuperFlow SF-840 chassis dyno along with radar gun test equipment and on-board diagnostics to do extensive vehicle power and acceleration tests on vehicles equipped with their exhaust system components. These tests verify that each component has been designed and optimized to produce throttle response, power band improvement, and torque. More torque - it's tested!




SHORTY HEADERS

Now available for truck and sport utility applications, the Edelbrock shorty headers have outstanding performance features such as mandrel-bent tubes and laser-cut or stamped flanges. They are direct replacements for stock manifolds, so installation is simple using the factory crossover pipe. Headers for throttle body injected engines are made of 17-gauge stainless steel to withstand the high-heat environment, other Edelbrock headers are made of durable 16-gauge mild steel. Two finishes available: Ti-Tech or ceramic coating. 50-state street legal.

- Made in the USA by Edelbrock for the ultimate in quality and performance
- Direct replacements for stock exhaust manifolds, simple installation using stock crossover pipe
- Shorty Headers are available in 2 finishes: Ti-Tech and ceramic coating
- Made of either heavy-duty 16-gauge mild steel or 17-gauge 409 stainless steel

DESCRIPTION	YEAR	ENGINE	FOOTNOTE	TI-TECH FINISH	CERAMIC COATED
GM FULL-SIZE BLAZER/JIMMY/YUKON/TAHOE/HUMMER H2					
K-5 Blazer/Tahoe/Yukon full-size	92-95	5.0/5.7L T.B.I. w/o A.I.R.	A,B	65663	65662
Blazer/Tahoe/Yukon full-size	93-95	5.0/5.7L T.B.I., with A.I.R.	A,B	65673	65672
Hummer H2	03-08	6.0L, without A.I.R. & E.G.R.	A,B	65023	65022
Tahoe/Yukon	96-99	5.7L, without A.I.R.	A	65103	65102
Tahoe/Yukon/Escalade	98-00	5.7L, with A.I.R.	A	65253	65252
Tahoe/Yukon/Escalade	99-06	4.8/5.3/6.0L without A.I.R.	A	65003	65002
Tahoe/Yukon/Escalade	99-06	4.8/5.3/6.0L with A.I.R.	A	65013	65012
Tahoe/Yukon	02-08	4.8/5.3/6.0L without A.I.R. & E.G.R.	A,B	65023	65022
CHEVROLET/GMC PICK-UPS					
1500/2500	88-95	5.0/5.7L T.B.I. without A.I.R.	A,B	65663	65662
1500/2500	88-95	5.0/5.7L T.B.I. with A.I.R.	A,B	65673	65672
1500/2500 Heavy Duty/3500	96-98	5.0/5.7L, without A.I.R.	A	65103	65102
1500	98-99	5.7L, with A.I.R.	A	65253	65252
1500/2500	99-08	4.8/5.3/6.0L without A.I.R., with E.G.R.	A	65003	65002
1500/2500	99-06	4.8/5.3/6.0L with A.I.R.	A	65013	65012
1500/2500	01-08	4.8/5.3/6.0L without A.I.R. & E.G.R.	A,B	65023	65022
2500/3500	03-06	8.1L without A.I.R. & E.G.R.	A,B	65193	65192
CHEVY AVALANCHE					
1500/2500	02-08	5.3/6.0L without A.I.R. & E.G.R.	A	65023	65022
1500/2500	02-06	5.3/6.0L with E.G.R.	A	65003	65002
1500/2500	02-06	5.3/6.0L with A.I.R. & E.G.R.	A	65013	65012
SUBURBAN					
1500/2500	92-95	5.0/5.7L T.B.I. without A.I.R.	A,B	65663	65662
1500/2500	92-95	5.0/5.7L T.B.I. with A.I.R.	A,B	65673	65672
1500/2500 HD, 8-lug	96-97	5.0/5.7L, C.P.I. without A.I.R.	A	65103	65102
1500	98-99	5.7L, with A.I.R.	A	65253	65252
1500/2500	99-06	4.8/5.3/6.0L without A.I.R.	A	65003	65002
1500/2500	99-06	4.8/5.3L with A.I.R.	A	65013	65012
1500/2500	02-08	4.8/5.3/6.0L without A.I.R. & E.G.R.	A,B	65023	65022
2500	03-06	8.1L without A.I.R. & E.G.R.	A,B	65193	65192
DODGE					
Durango/Dakota/Ram PU 1500/2500	95-03	5.2/5.9L F.I., without E.G.R.	A,C	65643	65642
Ram Pick-up 2 & 4 WD	03-05	5.7L Hemi	A	65693	65692
Ram Pick-up 2 WD	03-05	5.7L Hemi	A	65793	65792
Ram Pick-up 2 & 4 WD	2006	5.7L Hemi	A,B	65893	65892
FORD TRUCKS/SUVS					
Expedition	99-02	5.4L F.I. with EGR, w/o air ride suspension	A,D,E	65633	65632
F-150	04-07	5.4L F.I. with EGR, w/o air ride suspension	A,B,E	65233	65232
F-150/F-250	99-03	5.4L F.I. with EGR, w/o air ride suspension	A,E	65633	65632
JEEP/AMC					
CJ5, CJ7, CJ8	72-81	304, 360, 401 V8 with A.I.R.	A,F,H	65813	65812
AMC/Jeep	70-91	304, 360, 401 V8 w/o A.I.R.	A,F,H	65913	65912
Jeep Wrangler/Cherokee	91-99	4.0L	A	65923	65922
Wrangler	00-06	4.0L	A,B	65933	65922

Shorty Headers Footnotes

- (A) Replaces exhaust manifolds only.
No extension pipes included.
(B) 409 stainless steel.

- (C) Will fit 97-02 R/T.
(D) Will not fit SVT, Lightning & Harley editions.
(E) Will not fit Super Duty models.
(F) Dog leg port.

- (H) Direct replacement for high-flow exhaust manifolds used on most V8 Jeeps and some AMC cars. Others may need modification to convert.

DISCLAIMER: The application data provided in this catalog is for information purposes only. Definitive application data should be obtained directly from the manufacturer.

Some parts are not legal for sale or use in California on any pollution controlled motor vehicle.



FLOWTECH Truck/SUV Headers

FlowTech headers are precision engineered and leak tested to get maximum performance and fuel economy from your engine. Each header features FlowTech's exclusive, thick, mandrel-formed Power Plenum™ collector. All ports are precisely fitted and finished with sturdy, leak-proof O-ringed port seals, and all FlowTech headers include all mounting hardware including bolts, nuts and premium gaskets.



EMISSION COMPATIBLE TRUCK HEADERS

Flowtech's emissions friendly headers are just the ticket for those who want the best of both worlds – top performance and simple installation. All Shorty Smog Headers are leak tested and bolt on quickly and easily to the factory exhaust system, retaining all stock emissions equipment, and offering better throttle response, improved horsepower and torque plus increased efficiency!

Application

Chevrolet/GMC

99-02 GM P/U Truck, Suburban/Yukon/Escalade 6.0L w EGR	91835FLT
02-06 GM P/U Truck, Tahoe/Suburban/Yukon & 02-06 Avalanche/Escalade 4.8L, 5.3L w/o EGR	91836FLT
98-00 GM P/U Truck, Tahoe/Suburban/Yukon/Escalade, 5.7L w AIR	91837FLT
99-02 Truck/SUV w/o AIR W/EGR 4.8/5.3L	91834FLT
96-97 1500, 2500 A.I.R., Suburban, Tahoe 5.7L	91832FLT
99-02 Sierra/Silverado 4.8/5.3L	91834FLT

Dodge

04-05 Ram 1500	91946FLT
92-95 Dakota, Durango, Ram 5.2L, 5.9L	91940FLT
2003 Ram Hemi, 4X2	91941FLT
00-03 Dakota and Durango 4.7L	91944FLT
96-03 Dakota, Durango, Ram 5.2L, 5.9L	91945FLT

Ford

97-02 Expedition, Excursion & F-Series PU (exc. HD) , 5.4L	91669FLT
97-02 Expedition, Excursion & F-Series PU (exc. HD) , 4.6L	91670FLT

Toyota

00-04 Tundra, 02-03 Sequoia	91730FLT
-----------------------------	----------

All Part Numbers are for Painted Headers. Add -1FLT for Coated Headers

FLOWTECH I HEADERS

Formed from specially selected .049 cold roll flash controlled tubing with thick, mandrel-formed Power Plenum™ collector. All ports are precisely fitted & finished with sturdy leakproof O-ringed port seals. Includes all mounting hardware. Electro-statically applied PPG satin black finish.



FLOWTECH II CERAMIC HEADERS

All the great features of Standard Finish Headers with these added benefits. Finished with a specially formulated, NASA developed silver luster ceramic coating for longer rust & corrosion resistance. Made in USA. Not all applications listed.



APPLICATION	ENGINE	PRI TUBE	A/C	AUTO	STD	FOOTNOTES	FLOWTECH I	FLOWTECH II
Chevrolet/GMC								
88-95 1500, 2500PU 2 & 4WD	5.0/5.7L	1 1/2" OE	Y	Y Y	Y Y	8, 53, 99, 100, 111	91830FLT	91830-1FLT
88-95 1500, 2500PU 2 & 4WD w/AIR	5.0/5.7L	1 1/2" OE	Y	Y Y	Y Y	2, 53, 99, 100, 111	91831FLT	91831-1FLT
96-00 Pickup and SUVs	5.7L w/o AIR	1 1/2" OE	Y	Y Y	Y Y	53, 99, 100	91832FLT	91832-1FLT
99-02 Truck/SUV w/o AIR W/EGR	5.3L	1 5/8"OE	Y	Y Y	Y Y		91834FLT	91834-1FLT
88-91 1/2, 3/4 and 1 ton pickup	305-350	1 1/2" x 2 1/2"	Y	Y Y	Y Y	58, 102, 104	11508FLT	31508FLT
88-95 1500, 2500, 3500 PU	5.0-5.7L	1-5/8 x 3	Y	Y Y	N Y	1,3,4,6,58,75,90	11504FLT	31504FLT
88-91 1 Ton Crew Cab	283-400	1-1/2 x 3	23	Y N	O Y	1,3,4,6,21,42,50,58	11500FLT	31500FLT
68-81 1/2, 3/4 Ton PU	396-454	1-3/4 x 3	Y	Y Y	Y Y	1,3,4,6,69	11530FLT	31530FLT
73-87 1/2, 3/4 1 Ton PU	283-400	1-1/2 x 3	23	Y N	N Y	1,3,4,6,21,42,58	11500FLT	31500FLT
66-72 1/2, 3/4 Ton PU, Blazer, Suburban	283-400	1-1/2 x 3	23	Y N	42 42	1,4,32,58	11500FLT	31500FLT
73-91 Blazer/Jimmy K5	283-400	1-1/2 x 3	23	Y N	N Y	1,3,4,6,21,58	11500FLT	31500FLT
73-81 Blazer/Jimmy K5, Suburban	396-454	1-3/4 x 3	Y	Y Y	Y Y	1,3,4,6,69	11530FLT	31530FLT
73-91 Suburban	283-400	1-1/2 x 3	23	Y N	N Y	1,3,4,6,21,58	11500FLT	31500FLT
72-93 1/2, 3/4 Ton PU	273-360	1-5/8 x 2-1/2	Y	Y N	Y Y	3,4,6,8,242,243	13500FLT	33500FLT
Ford								
65-76 F-100/150/250	352-428	1-3/4 x 3	Y	Y N	Y Y	3,29	12540FLT	32540FLT
65-76 F100/150	332-428	1-3/4 x 3	Y	Y N	Y Y	3	12542FLT	32542FLT
67-76 F250	332-428	1-3/4 x 3	Y	Y N	Y Y	3	12542FLT	32542FLT
69-79 F100	302W	1-1/2 x 3	Y	Y N	Y Y	3,4,5	12500FLT	32500FLT
80-95 F100/150/250/350	302W	1-1/2 x 2-1/2	Y	Y N	N N	3,4,6	12502FLT	32502FLT
80-95 F100/150/250/350	351W	1-1/2 x 2-1/2	Y	Y N	Y Y	3,4	12504FLT	32504FLT
80-95 F100/150/250/350	351W	1-1/2 x 2-1/2	Y	Y N	Y Y	3,4	12504FLT	32504FLT
77-79 F150/250/350	351-400M	1-3/4 x 3	Y	Y N	Y Y	3,4,28	12520FLT	32520FLT
80-95 Bronco	302W	1-1/2 x 2-1/2	Y	Y N	N N	3,4	12502FLT	32502FLT
80-95 Bronco	351W	1-1/2 x 2-1/2	O	Y Y	O O	3,4	12504FLT	32504FLT
78-79 Bronco	351-400M	1-3/4 x 3	Y	Y N	N Y	3,4	12520FLT	32520FLT
87-95 F150/F250 Bronco	5.0L	1 1/2" OE	Y	Y Y	Y Y	53, 99, 100	91627FLT	91627-1FLT
86-95 F150/F250 Bronco	5.8L	1 1/2" OE	Y	Y Y	Y Y	53, 99, 100	91628FLT	91628-1FLT
Jeep								
72-82 CJ 5, 6, 7 Fender	290-401	1 5/8" x 3"	Y	Y N	Y Y	3, 57	13550FLT	33550FLT

Y=Yes, N=No, O=Not Verified

Footnotes:

- Available w/A.I.R. inj. manifold welded in place. Add suffix "S" to the part number when ordering (not available w/ceramic finish headers)
- THESE HEADERS ARE A.I.R. COMPATIBLE.**
- Must modify stock exhaust to retain catalytic converter system
- Not legal for use on pollution controlled motor vehicles. Legal only for racing vehicles that will never be driven upon a highway. If you have any questions, please contact your FLOWTECH™ dealer.
- Can be modified to fit A.I.R. fittings in head
- Applications w/oxygen sensor use reducer #10105 for 2-1/2" 3-bolt flange or #10110 for 3" 3-bolt flange

- Will not fit with A.I.R. injection pump
- On 83-84 4WD it is necessary to remove rubber stopper below starter
- Requires A/C bracket #10042FLT, '79 & later use OE bracket
- Pre-70 vehicles w/exhaust manifold mounted alternator/generator use bracket #10031
- May require clutch linkage modifications
- Stock replacement, bolts directly to factory head pipes
- Will not fit angle plug heads
- Must use original factory Big Block engine frame mounts & hardware
- Fits w/OE factory equipped style transmission only
- Catalytic converter compatible Y-pipe available separately. Add suffix "Y" to part number

- 49 states emissions legal, California E.O. pending
- Will work with factory exhaust
- Fits applications where driver's side manifold has its exit rear of the rear-most exhaust port.
- Will not fit with high torque starter
- Collector in non flanged integral reducer type
- Will not fit Super Duty
- With out E.G.R.
- With E.G.R.
- Y=YES, N=NO, O=NOT VERIFIED

Diesel Exhaust Systems Non-D.P.F. Equipped

MAGNAFLOW
Performance
EXHAUST

NON-D.P.F. EQUIPPED DIESEL TRUCKS & SUVs SYSTEMS

MagnaFlow's PRO Performance diesel systems are our entry-level performance diesel system featuring a 100% stainless steel muffler and mandrel-bent stainless steel tubing. Optional 5" diesel tips are sold separately. MagnaFlow PRO Performance Diesel Exhaust comes with a Lifetime Warranty, Dyno Tested And Proven To Make Power, Performance Gains In Horsepower And Torque, Great Sound -Has A Smooth; Deep Tone, Easy To Install, Mandrel-Bent. All Welded. Built To Last.



POWER AND SOUND

CHEVROLET DURAMAX

MAGNAFLOW PRO	4" SYSTEM	5" SYSTEM	DUAL
'06-'07 6.6L V8 Cat-Back Silverado 2500HD/3500 CC/SB (Style A)	17943	17961	17965
'06-'07 6.6L V8 Cat-Back Silverado 2500HD/3500, CC/LB, inc. Dually (Style A)	17941	17963	N/A
'01-'07 6.6L Turbo-Back Silverado 2500HD/3500 CC/SB (Style A)	17902	17909	17903

DODGE CUMMINS

MAGNAFLOW PRO	4" SYSTEM	5" SYSTEM	DUAL
'04.5-'07 5.9L H.O. I6 V8 Cat-Back 2500/3500 CC-MC/SB-LB (Style A)	OEM	17956	N/A
'04.5-'07 5.9L H.O. I6 V8 Turbo-Back 2500/3500 CC-MC/SB-LB (Style A)	OEM	17989	17990

FORD POWERSTROKE

MAGNAFLOW PRO	4" SYSTEM	5" SYSTEM	DUAL
'03-'07 6.0L V8 Cat-Back F-250/F-350/H-Davidson CC/SB-LB (Style A)	17951	17949	17967
'05-'07 6.0L V8 Turbo-Back F-250/F-350/H-Davidson CC/SB-LB EC/LB (Style A)	17922	17927	17923
'03-'04 6.0L V8 Turbo-Back F-250/F-350/H-Davidson CC/SB-LB EC/LB (Style A)	17978	17949	17977
'99-'03 7.3L V8 Cat-Back F-250/F-350 CC/SB-LB (Style A)	17951	17949	17967
'99-'03 7.3L V8 Turbo-Back F-250/F-350 CC/SB-LB, EC/LB (Style A)	17979	17907	N/A

Style A - Single Exit Behind Rear Passenger Tire,

Style E - Dual Opposite Side Exits Behind Tires

CC= Crew Cab, EC= Extended Cab, SC= Standard Cab, SB= Short Bed, LB= Long Bed



Some parts are not legal for sale or use in California on any pollution controlled motor vehicle.

MAGNAFLOW[®]

Performance

EXHAUST

Diesel Exhaust D.P.F Systems

Diesel Particulate Filter-Back

D.P.F. SERIES DIESEL EXHAUST SYSTEMS (Diesel Particulate Filter-Back)

Systems include mandrel-bent stainless steel tubing, a mirror finish 100% stainless steel muffler, an optional muffler delete pipe, band clamps, and polished MagnaFlow single-wall inter-cooled tips.

- MagnaFlow Performance with a Lifetime Warranty
 - OEM-Style Barbed Hangers
 - Giant Polished Stainless Steel Single-Wall Inter-Cooled Tip
- You can expect significant gains in horsepower, torque, improved fuel economy and a lower EGT (exhaust gas temperature).

Available in three levels of performance.

MagnaFlow Performance

The Premium line

16974



XL Performance

The Mid-level line

16913



MagnaFlow Pro

The Entry-level line

17972



CHEVROLET/GMC DURAMAX DIESEL

2007-09 Silverado/Sierra 2500HD/3500HD
6.6L LMM V8 CC/SB-LB, EC/LB

System Type	MagnaFlow Performance	XL Performance	MagnaFlow PRO
5" Filter-back, Style A	16912	16913	17913
4" Filter-back, Style A	16910	16911	17911
Dual filter-back, Style F	16914	16915	17915

DODGE CUMMINS DIESEL

2007-09 RAM 2500/3500
6.7L Cummins I-6 CC-MC/SB, CC/LB, SC/LB

System Type	MagnaFlow Performance	XL Performance	MagnaFlow PRO
5" Filter-back, Style A	16975	16972	17972
4" Filter-back, Style A	16973	16970	17970
Dual filter-back, Style F	16974	16971	17971

FORD POWERSTROKE DIESEL

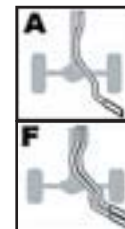
2008-09 F-250/F-350/F-450
6.4L V8 CC/SB-LB, EC/LB, Single & Dual Rear Wheel

System Type	MagnaFlow Performance	XL Performance	MagnaFlow PRO
5" Filter-back, Style A	16982	16984	17984
4" Filter-back, Style A	16981	16983	17983
Dual filter-back, Style F	16987	16989	17988

Style A - Single Exit Behind Rear Passenger Tire, Polished MagnaFlow Single-Wall Tip

Style F - Dual Same Side Exit Behind Rear Passenger Tire, Polished MagnaFlow Single-Wall Tips

CC= Crew Cab, EC= Extended Cab, SC= Standard Cab, SB= Short Bed, LB= Long Bed



Gas Truck/SUV Systems

MagnaFlow offers three lines of performance exhaust systems for gas truck/SUV applications. MagnaFlow Performance the premium line features a POLISHED 100% stainless steel muffler and mandrel-bent stainless steel tubing with DOUBLE WALL tip(s). XL Performance is the mid-level performance system and MagnaFlow Pro is the entry-level performance system. All three lines are 100% stainless steel and backed by a lifetime warranty!

MAGNAFLOW

Performance
EXHAUST

CHEVROLET

Make/Model	Part No.
AVALANCHE	
'07-'09 5.3L V8 1500 (Style A)	16721
SILVERADO 1500 HEAVY-DUTY	
2007 6.0L V8 Classic HD, CC/SB, dual inlet muffler only (Style A)	15782*
Dual Split Rear Exit, (Style C)	15828
SILVERADO 2500 HEAVY-DUTY	
'07-'09 6.0L V8, CC/LB, (Style A)	16789
Dual Behind the Rear Tires, (Style E)	16790
SILVERADO LIGHT-DUTY	
'07-'09 4.8L/5.3L/6.0L V8 EC*-CC/SB, inc. Vortec MAX (Style A)	16740
Dual Split Rear Exit, (Style C)	16741
'07-'09 4.3L V6, 4.8L/5.3L V8 SC/SB, 1500 (Style A)	16742
Dual Split Rear Exit, (Style C)	16743
SUBURBAN 1500	
'07-'09 5.3L V8 (Style A)	16722
SUBURBAN 2500	
'07-'09 6.0L V8 (Style A)	16725
TAHOE	
'07-'09 4.8L/5.3L V8 (Style A)	16672

DODGE

Make/Model	Part No.
RAM 1500 LIGHT-DUTY HEMI	
2009 5.7L V8, CC/SB, 1500 Hemi, Dual Split Rear Exit, IFS (Style C)	16870
2009 5.7L V8, SC/SB, 1500 Hemi, Dual Split Rear Exit, IFS (Style C)	16869
2008 5.7L V8 MC/SB, 1500 Hemi IFA (Style A)	16850
Dual Split Rear Exit, IFA (Style C)	16851
'06-'08 5.7L V8 SC-CC-MC/SB-LB, 1500 Hemi SFA (Style A)	16696
Dual Split Rear Exit, SFA (Style C)	16697
'06-'07 5.7L V8 CC-MC/SB, CC/LB, 1500 Hemi IFS (Style A)	16699
Dual Split Rear Exit, IFS (Style C)	16700
RAM LIGHT-DUTY	
2009 4.7L V8 CC/SB, 1500, Dual Split Rear Exit, (Style C)	16870
2009 4.7L V8 SC/SB, 1500, Dual Split Rear Exit, (Style C)	16869

FORD

Make/Model	Part No.
EXPEDITION	
'07-'09 5.4L V8 EL, Rear Side Exit, (Style A)	16752
'07-'09 4.6L/5.4L V8 Rear Side Exit, (Style A)	16607
F-150 LIGHT-DUTY	
'05-'09 4.6L/5.4L V8 SC/SB (Style A)	16613
Dual Split Rear Exit, (Style C)	16615
Dual Same Side Exit in Front of Tire, (Style B)	16617
'04-'09 4.6L/5.4L V8 EC-CC/SB, Rear Side Exit** (Style A)	16612
Dual Split Rear Exit*, (Style C)	16614
Dual Same Side Exit in Front of Tire*, (Style B)	16616
Dual Same Side Exit Behind Rear Tire, (Style F)	16608
FLEX	
2009 3.5L V6, Rear Exit (Style D)	15869

*Will not fit Supercrew with 6.5' bed, will not fit EC with 5.5' bed

**Will not fit EC with 5.5' bed

CC= Crew Cab, EC= Extended Cab, SC= Standard Cab,
SB= Short Bed, LB= Long Bed



POWER AND SOUND



Some parts are not legal for sale or use in California on any pollution controlled motor vehicle.

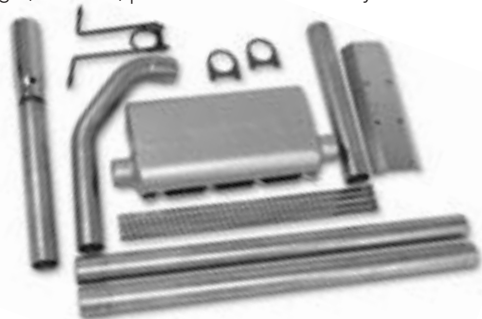


FLOWMASTER Exhaust

Complete Flowmaster systems outperform most OEM and competitive aftermarket exhaust systems. Why? Because all Flowmaster systems are designed and tested for each specific type of vehicle. Our systems always include design specific muffler applications and mandrel bent tubing which work together, creating a general improvement in power, exhaust tone and gas mileage.

DIESEL PERFORMANCE EXHAUST SYSTEMS

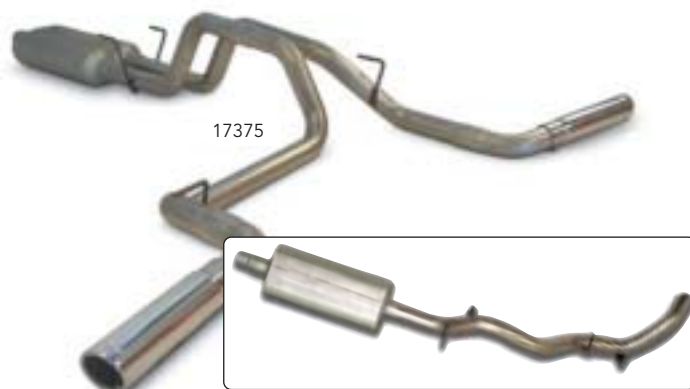
Flowmaster's performance exhaust systems help to significantly increase mileage, torque, and horsepower while greatly improving towing and acceleration. At the heart of every Flowmaster system is Flowmaster's patented muffler technology. This design creates a low pressure area between exhaust pulses that works to pull spent exhaust gases from the cylinder, allowing the freer entry of the new fuel air charge. The result is improved power as the engine has a cleaner mixture to burn. This creates improved fuel economy as less fuel is now required to achieve the same level of performance. In addition to performance, Flowmaster exhaust systems produce the distinct Flowmaster tone and add the custom Flowmaster look. All Flowmaster exhaust systems are made from heavy 16 gauge mandrel bent aluminized steel pipe for strength, better fit, performance and durability.



DESCRIPTION

PART NO.

01-05 Chevy/GMC 3/4-1 ton Duramax, 4.00" Single Out Side	17349
03-05 Ford F250-350 Automatic tranny, 6.0L, 4.00" Turbo Back 5.05	17377
03-06 Ford F250-350 Manual tranny, 6.0L, 4.00" Turbo Back 5.05	17378
99-03 F250/F350Force II system, 4.00" Turbo Back 5.05	17365
99-03 Excursion 7.3L, 4.00" Turbo Back Kit, Single Out Side	17371
98-02 Dodge Ram 2500/3500, 24V Turbo Back Kit, Single Out Side	17346
03-04 Dodge Ram, 4.00", 24V Turbo Back Kit, Single Out Side	17374
03-05 Dodge Ram, 5.9L	17402



FLOWMASTER CAT BACK EXHAUST SYSTEMS

Why buy a Flowmaster Cat Back system? Matched performance! Flowmaster systems aren't pipes and a muffler, but each system matches the ideal muffler to the vehicle application and tubing size. Flowmaster produces 9 different families of performance mufflers and the engineers at Flowmaster select the correct to provide optimum flow and sound for the engine size and downpipe and converter.

Make/Model	Year	Amer Thndr	Force II	Exit
CHEVROLET/GM				
Avalanche 5.3L	01-06		17341	SOS
Tahoe/Yukon	2007		17431	SOS
Tahoe/Yukon	00-06		17344	SOS
Silverado/Sierra/1500 4.8/5.3L SC/SB	99-06		17360	SOS
Silverado/Sierra/1500 4.8/5.3L EC/SB	99-06	17428		COMBO
Silverado/Sierra/1500 4.8/5.3L SC/LB	99-05		17361	SOS
Silverado/Sierra 1500HD 6.0L	01-03	17350		SOS
Silverado/Sierra 2500HD/3500 8.1L	01-05		17328	SOS
Silverado CK 1500 w/119" W/B 4.8/5.3L		17435		DOS/DOR
Silverado CK 1500 (not HD) 4.8/5.3L	07-08	17440		DOR/DOS
Denali/Escalade 6.0L (not EXT/ESV)	00-04	17401		SOS
Suburban 5.3L V8	01-06		17341	SOS
Suburban 5.3L V8	01-06	17342		DOS
Hummer H2	03-06	17376		SOR

Make/Model	Year	Amer Thndr	Force II	Exit
DODGE				
Durango	98-03	17208		SOR
Durango Hemi	04-06	17400		DOR
Ram 1500	94-01	17429		COMBO
Ram 1500 (not Hemi)	02-05	17353		DOR
Ram 1500 (not Hemi)	03-05	17352		DOS
Ram 1500 Hemi 5.7L	2003	17375		DOR/DOS
Ram 1500 Hemi 5.7L	2003	17387		DOSS
Ram 1500 Hemi 5.7L	04-05	17397		DOR/DOS
Ram 1500 Hemi 5.7L	04-05	17398		DOSS
Ram 1500 Hemi 5.7L Magnum (exc. Mega Cab)		17423		DOR/DOS
Ram 1500 4.7L/5.9L	2006	17424		COMBO
Ram 2500/3500 5.7L	03-07	17438		DOS/DOR

FORD				
Expedition V8	03-06		17411	SOS
Expedition/Navigator	97-02		17385	SOS
F150 4.6/5.4L	98-03		17222	DOR
F150 4.6/5.4L	98-03		17226	DOS
F150 Lightning	99-03	17367		DOSS
F150 4.6/5.4L	04-06	17417		DOS/DOR
F150 4.6/5.4L	04-06		17418	DOS/DOR
F250/F350 V8/V10 Super Duty	99-04		17345	SOS

TOYOTA				
Tundra 5.7L	07-08	17443		DOS/DOR

Abbreviation Key - (DOR - Dual out the rear, DOS - Dual out the side, DOSS - Duals out the same side, SOR - Single out the rear, SOS - Single out the side

FLOWMASTER Exhaust

Complete Flowmaster systems outperform most OEM and competitive aftermarket exhaust systems. Why? Because all Flowmaster systems are designed and tested for each specific type of vehicle. Our systems always include design specific muffler applications and mandrel bent tubing which work together, creating a general improvement in power, exhaust tone and gas mileage.



FLOWMASTER® Mufflers named "Top Ten Most Significant Speed Parts of All Time!" by Hot Rod Magazine



SUV PERFORMANCE 50 SERIES

The SUV Performance muffler is a larger version of Flowmaster's 50 series muffler and designed for truck and SUV applications, including vehicles equipped with large displacement engines. This muffler features a special tuning chamber and larger 5x10" case for improved sound control and optimum exhaust flow.

DESCRIPTION	PART NO.
Dual 2 1/2" in/Center 3" out	524553
Dual 2 1/2" in/ Dual 2 1/2" out	524554
2 1/4" Center in/2" Dual out	524552
2 1/2" Center in/2 1/4" Dual out	525552
3" Center in/2 1/2" Dual out	530552
2 1/4" Offset in/2" Dual out	524562
2 1/2" Offset in/2 1/4" Dual out	525562
2 1/2" Offset in/2 1/2" Dual out	525561
3" Offset in/2 1/2" Dual out	524562

"Big Block II"



HIGH PERFORMANCE STREET, TRUCK & RV MUFFLERS 70 SERIES

The 70 Series Big Block II is designed using a large Flowmaster case for maximum volume and efficiency. The case is two inches narrower than Flowmaster's original Big Block muffler, making for easier installation in tight applications. The 70 Series offers a mild mellow exhaust tone and incorporates a Resonant Tuning Chamber for reduced interior sound levels. It is great for tow vehicles and RV's and trucks with dual exhaust.

DESCRIPTION	PART NO.
3.00" Center In/Center Out	53070
2.50" Offset In/Center Out	52571
3.00" Offset In/Center Out	53071
3.00" Center In/Offset Out	53072
3.00" Offset In/Offset Out	53073
Dual 2.25" In/Single 3.00" Center Out	524703
Dual 2.25" In/Out	524704

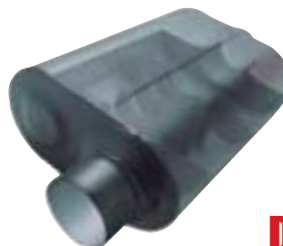


HIGH PERFORMANCE 50 SERIES HD

Designed for:
Late-Model Hemi Trucks
Modified Trucks & SUVs
Diesel applications

Flowmaster 50 Series Heavy Duty mufflers are built tough, like the trucks and engines they are designed for. Four inch internals in a 5" x10" case allow maximum exhaust flow for increased mileage, torque, and horsepower while improving towing and acceleration. Ideally suited for late model gasoline and diesel truck applications.

DESCRIPTION	PART NO.
4" Center In/4" Center out	954055
4" Offset In/4" Center out	954056
3.50" Offset In/3.50" Opposite offset out	953558
3" Offset In/3" Center out	9530560
3" Center In/2.50" Dual out	9530572
3" Offset In/2.50" Dual out	9530582



Flowmaster's Most Powerful Street Muffler! Deep POWERFUL Tone!

SUPER 40

The Super 40 features a 5" x 10" case design to create a deeper tone that retains the Classic Flowmaster 40 series sound. Increased Flow Path Radius for optimum internal flow using the latest in Delta Flow internal design. The Super 40 is the most aggressive, deepest sounding two-chamber muffler ever built. Dyno-performance is so impressive that we now include the Super 40's in some of our 3" muscle car systems.

DESCRIPTION	PART NO.	DESCRIPTION	PART NO.
2 1/4" Center in/2 1/4" Center out	952445	2 1/2" Offset in/2 1/2" Same Offset out	952549
2 1/4" Offset in/2 1/4" Center out	952446	3" Center in/3" Center out	953045
2 1/4" Center in/2 1/4" Offset out	952447	3" Offset in/3" Center out	953046
2 1/4" Offset in/2 1/4" Opposite Offset out	952448	3" Center in/3" Offset out	953047
2 1/4" Offset in/2 1/4" Same Offset out	952449	3" Offset in/3" Opposite Offset out	953048
2 1/2" Center in/2 1/2" Center out	952545	3" Offset in/3" Same Offset out	953049
2 1/2" Offset in/2 1/2" Center out	952546	3" Center in/2 1/2" Dual out	9530452
2 1/2" Center in/2 1/2" Offset out	952547	3" Offset in/2 1/2" Dual out	9530462
2 1/2" Offset in/2 1/2" Opposite Offset out	952548		